

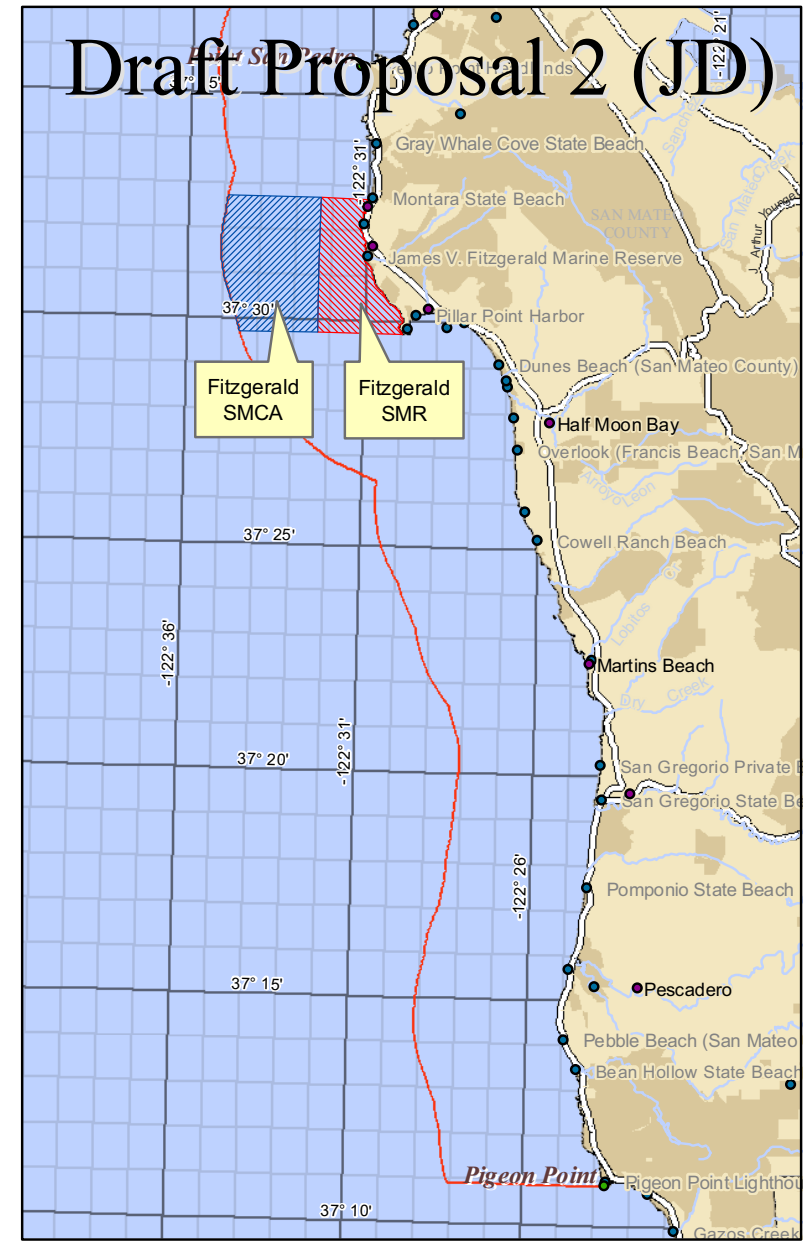
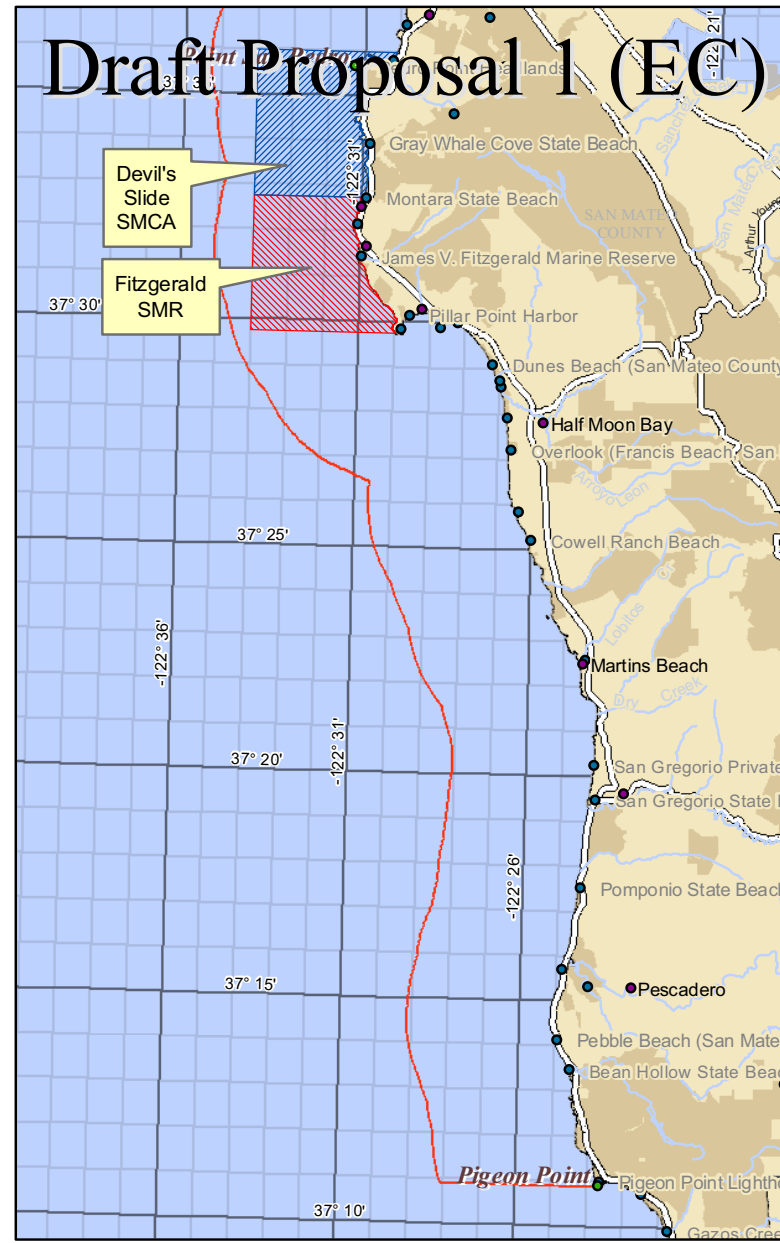
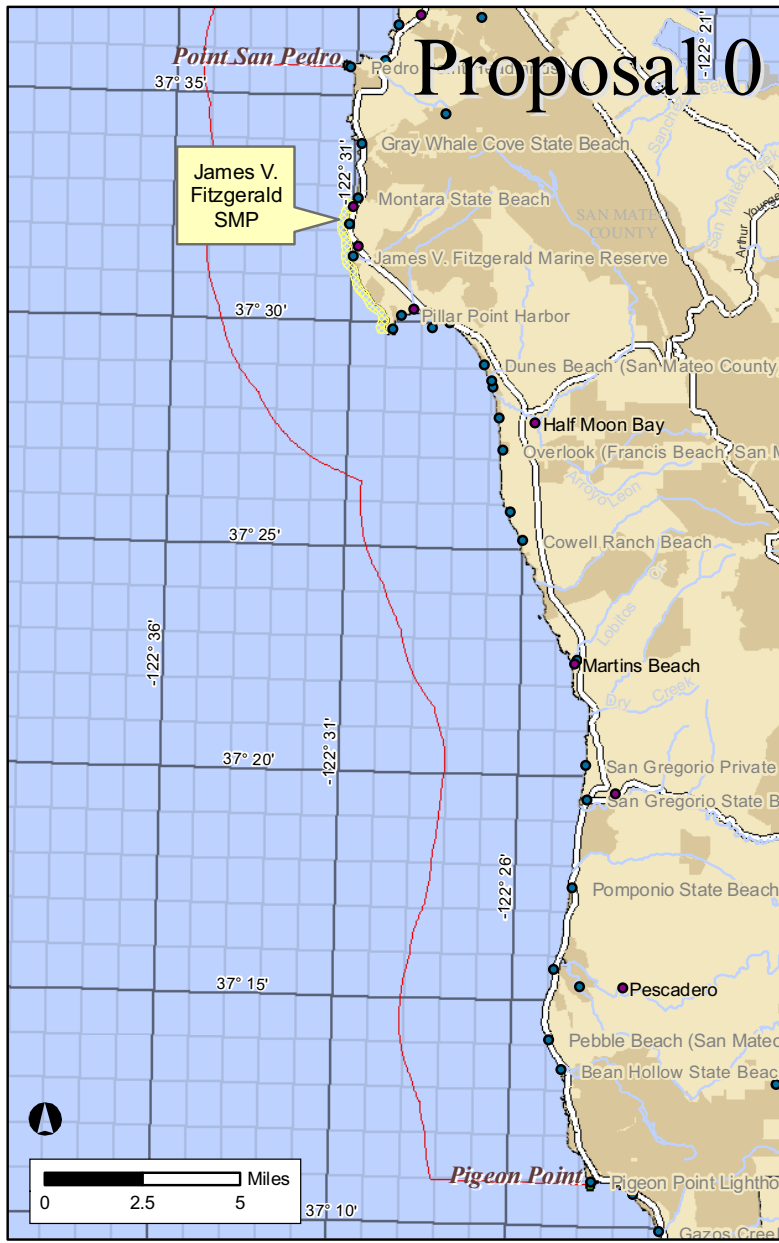
**California Marine Life Protection Act Initiative  
North Central Coast Project**

**Side-by-Side Comparison of Regional Proposal 0 and  
Draft MPA Proposals 1, 2, 3, 4 and External A**

**Subregion 5: Point San Pedro to Pigeon Point**

# MLPA North Central Coast Study Region: Subregion 5

Point San Pedro to Pigeon Point



## Draft MPA Proposals 0, 1 and 2

- State Marine Conservation Area (SMCA)
- State Marine Park (SMP)
- State Marine Reserve (SMR)
- State Marine Recreational Management Area (SMRMA)
- Public Lands
- North Central Coast Study Region

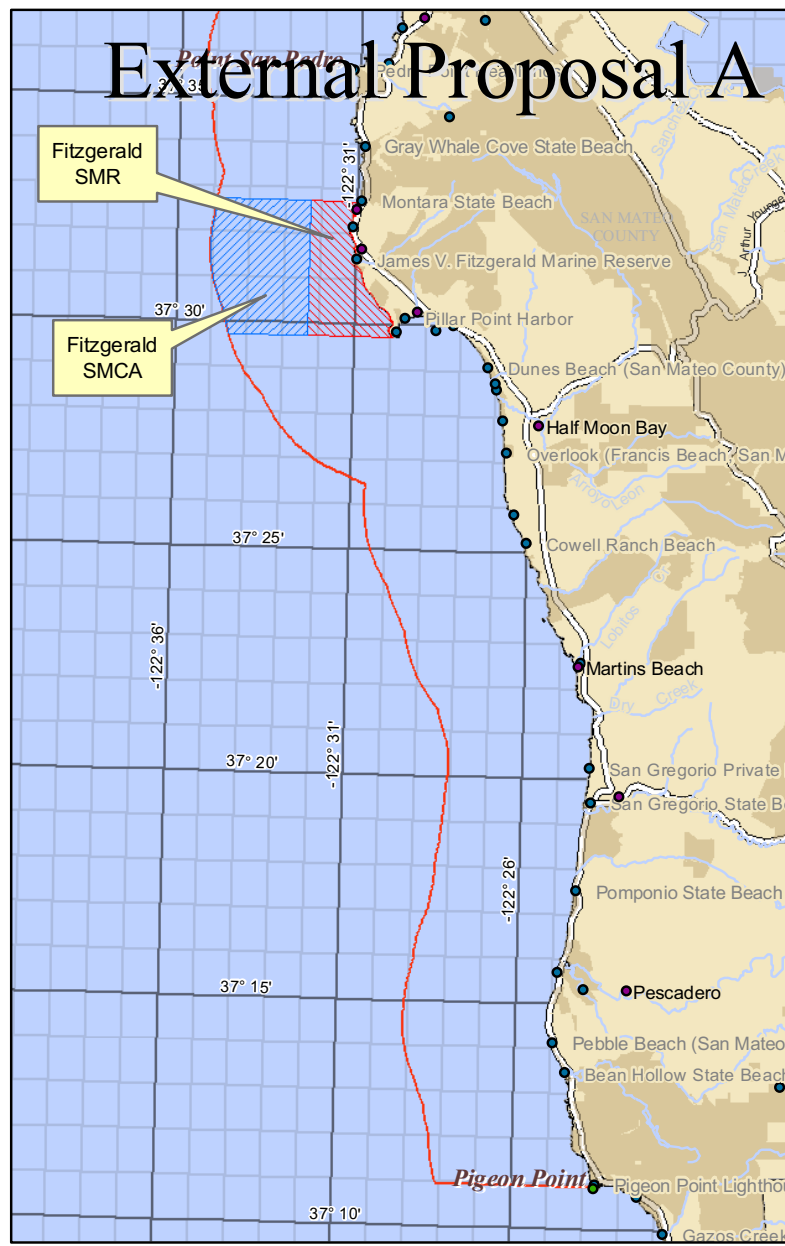
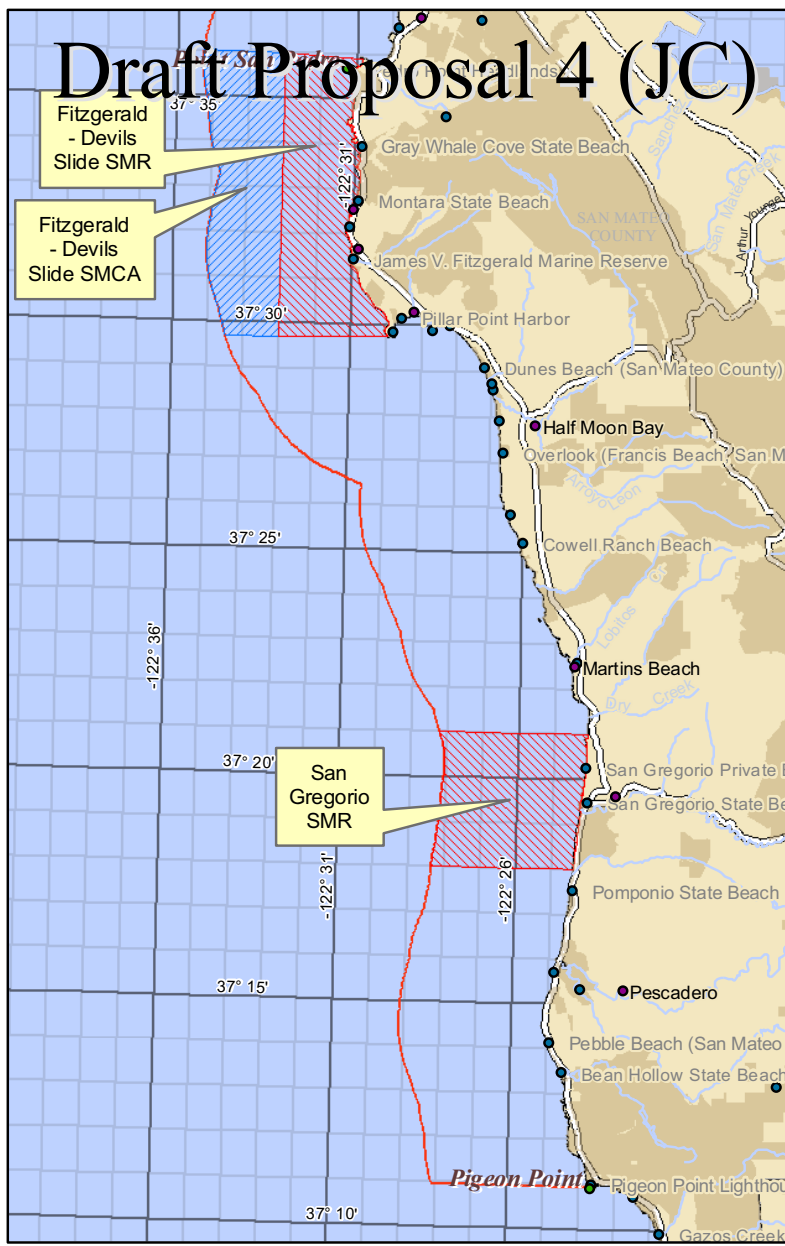
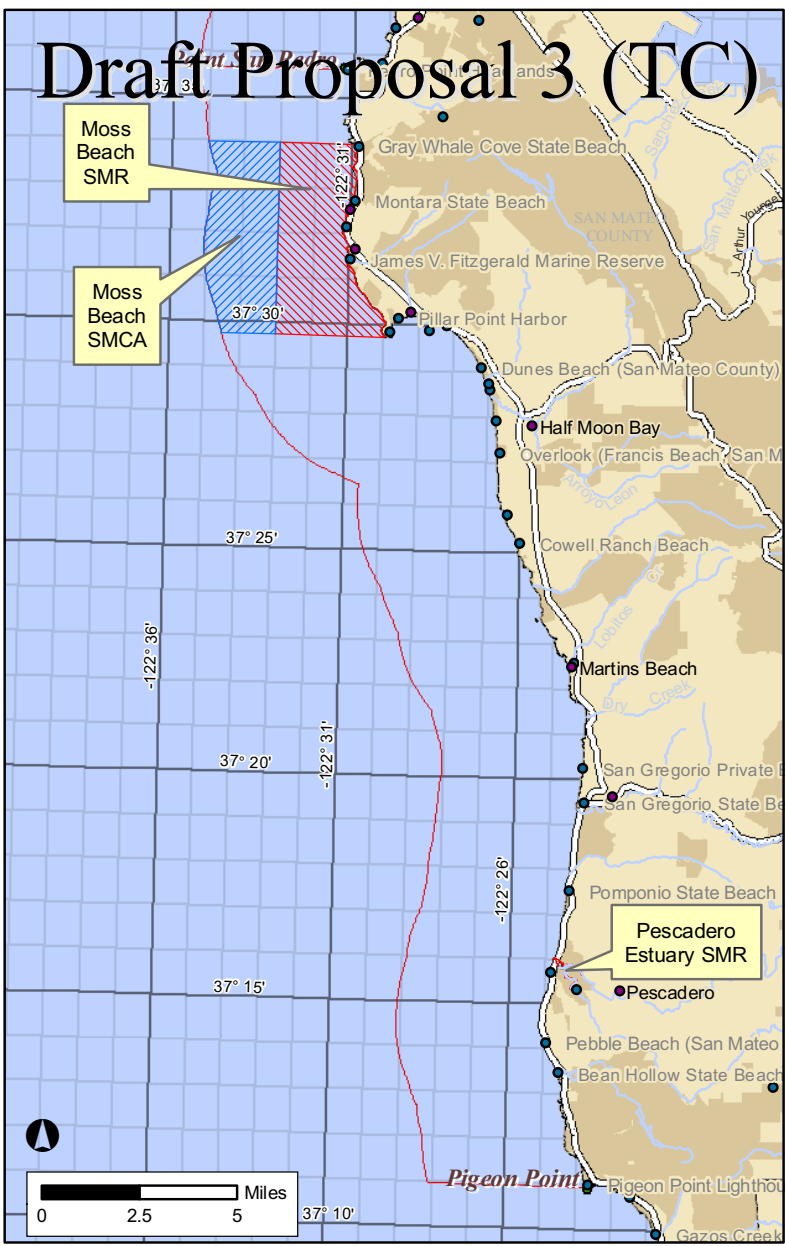
Proposal 0 illustrates the existing California state marine protected areas (MPAs) in the Marine Life Protection Act (MLPA) North Central Coast Study Region. Draft MPA proposals 1, 2, 3, 4 and External A are under review through the MLPA Initiative and are expected to be further revised in March 2008. These are not MPA proposals for adoption by the California Fish and Game Commission.



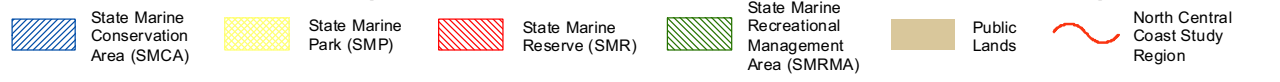
Prepared by DFG  
Marine Region GIS  
1/24/2008

# MLPA North Central Coast Study Region: Subregion 5

Point San Pedro to Pigeon Point



### Draft MPA Proposals 3, 4 and External Proposal A



Proposal 0 illustrates the existing California state marine protected areas (MPAs) in the Marine Life Protection Act (MLPA) North Central Coast Study Region. Draft MPA proposals 1, 2, 3, 4 and External A are under review through the MLPA Initiative and are expected to be further revised in March 2008. These are not MPA proposals for adoption by the California Fish and Game Commission.

**California Marine Life Protection Act Initiative**  
**Comparison of Proposed Regulations in Draft MPA Proposals for the North Central Coast Study Region**  
*Revised February 1, 2008*

	Proposal 0 (Existing MPAs)		Draft Proposal 1 (EC) (12/12/07 version)		Draft Proposal 2 (JD) (12/12/07 version)	
	MPA Name ( <i>Level of Protection</i> )	Proposed Regulations	MPA Name ( <i>Level of Protection</i> )	Proposed Regulations	MPA Name ( <i>Level of Protection</i> )	Proposed Regulations
<b>Subregion 5: Point San Pedro to Pigeon Point</b>	James V. Fitzgerald State Marine Park ( <i>Moderate low</i> )	No take EXCEPT recreational take by hook & line or spear: rockfish (Scorpaenidae), lingcod, surfperch (Embiotocidae), monkeyface eel, rock eel, white croaker, halibut, cabezon, kelp greenling, & smelt (Osmeridae & Atherinid)	Fitzgerald State Marine Reserve ( <i>Very high</i> )	No take	Fitzgerald State Marine Reserve ( <i>Very high</i> )	No take
			Devils Slide State Marine Conservation Area ( <i>Moderate high</i> )	Salmon trolling & crab (both commercial and recreational), wetfish (including squid)	Fitzgerald State Marine Conservation Area ( <i>Moderate high</i> )	Salmon trolling, anchovy, sardine, herring, dungeness crab (All applies to commercial and recreational)

**California Marine Life Protection Act Initiative**  
**Comparison of Proposed Regulations in Draft MPA Proposals for the North Central Coast Study Region**  
*Revised February 1, 2008*

	Draft Proposal 3 (TC) (12/12/07 version)		Draft Proposal 4 (JC) (12/12/07 version)		Draft External Proposal A (01/02/08 version)	
	MPA Name ( <i>Level of Protection</i> )	Proposed Regulations	MPA Name ( <i>Level of Protection</i> )	Proposed Regulations	MPA Name ( <i>Level of Protection</i> )	Proposed Regulations
<b>Subregion 5: Point San Pedro to Pigeon Point</b>	Moss Beach State Marine Reserve ( <i>Very high</i> )	No take	Fitzgerald- Devil's Slide State Marine Reserve ( <i>Very high</i> )	No take	Fitzgerald State Marine Reserve ( <i>Very high</i> )	No take
	Moss Beach State Marine Conservation Area ( <i>Moderate high</i> )	Salmon trolling, crab, and squid, commercial and recreational	Fitzgerald- Devils Slide State Marine Conservation Area ( <i>Moderate high</i> )	Salmon trolling, crab, coastal pelagics, and squid (commercial & recreational)	Fitzgerald State Marine Conservation Area ( <i>Moderate high</i> )	Salmon trolling, anchovy, sardine, herring, dungeness crab (All applies to commercial & recreational)
			San Gregorio State Marine Reserve ( <i>Very high</i> )	No take		
	Pescadero Estuary State Marine Reserve ( <i>Very high</i> )	No take				