

**California Marine Life Protection Act Initiative  
North Central Coast Project**

**Side-by-Side Comparison of Regional Proposal 0 and  
Draft MPA Proposals 1, 2, 3, 4 and External A**

**Subregion 4: Double Point to Point San Pedro**

# MLPA North Central Coast Study Region: Subregion 4

Double Point to Point San Pedro



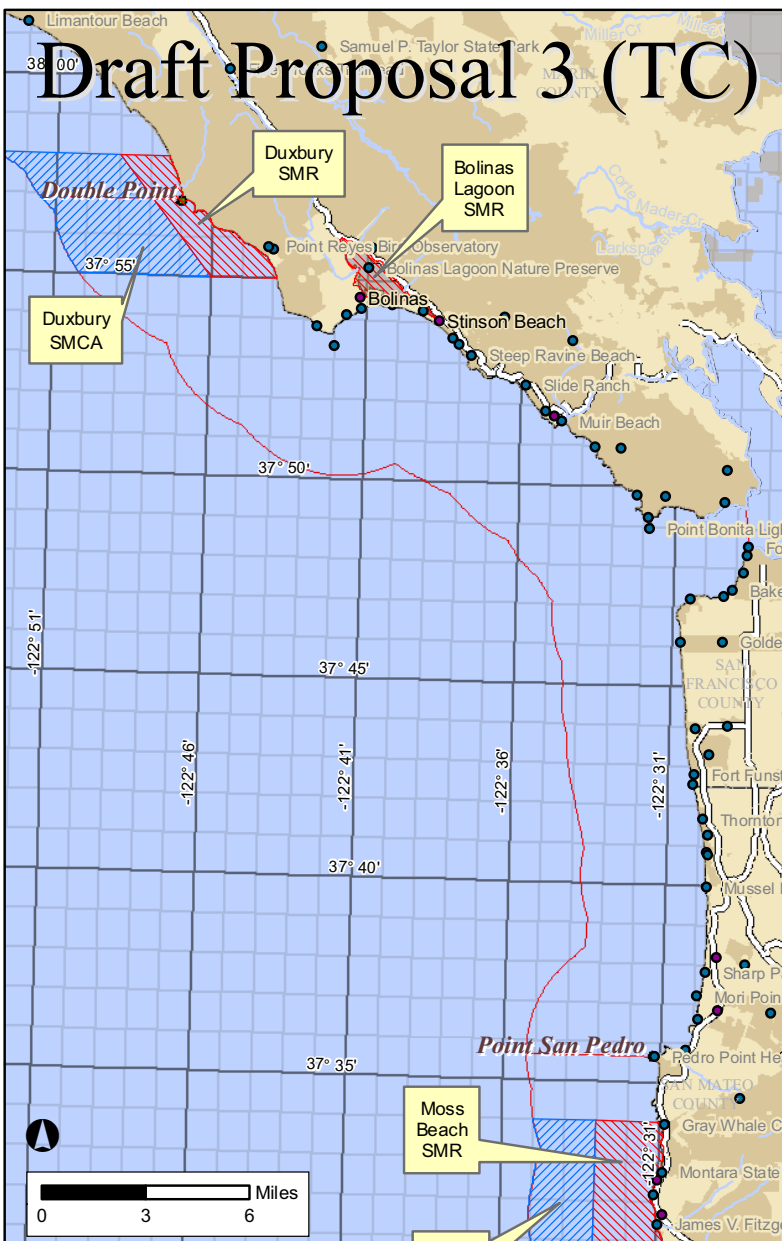
## Draft MPA Proposals 0, 1 and 2

- State Marine Conservation Area (SMCA)
- State Marine Park (SMP)
- State Marine Reserve (SMR)
- State Marine Recreational Management Area (SMRMA)
- Public Lands
- North Central Coast Study Region

Proposal 0 illustrates the existing California state marine protected areas (MPAs) in the Marine Life Protection Act (MLPA) North Central Coast Study Region. Draft MPA proposals 1, 2, 3, 4 and External A are under review through the MLPA Initiative and are expected to be further revised in March 2008. These are not MPA proposals for adoption by the California Fish and Game Commission.

# MLPA North Central Coast Study Region: Subregion 4

Double Point to Point San Pedro



## Draft MPA Proposals 3, 4 and External Proposal A

- State Marine Conservation Area (SMCA)
- State Marine Reserve (SMR)
- State Marine Park (SMP)
- State Marine Recreational Management Area (SMRMA)
- Public Lands
- North Central Coast Study Region

Proposal 0 illustrates the existing California state marine protected areas (MPAs) in the Marine Life Protection Act (MLPA) North Central Coast Study Region. Draft MPA proposals 1, 2, 3, 4 and External A are under review through the MLPA Initiative and are expected to be further revised in March 2008. These are not MPA proposals for adoption by the California Fish and Game Commission.

**California Marine Life Protection Act Initiative**  
**Comparison of Proposed Regulations in Draft MPA Proposals for the North Central Coast Study Region**  
*Revised February 1, 2008*

	Proposal 0 (Existing MPAs)		Draft Proposal 1 (EC) (12/12/07 version)		Draft Proposal 2 (JD) (12/12/07 version)	
	MPA Name (Level of Protection)	Proposed Regulations	MPA Name (Level of Protection)	Proposed Regulations	MPA Name (Level of Protection)	Proposed Regulations
<b>Subregion 4: Double Point to Point San Pedro</b>			Double Point State Marine Reserve ( <i>Very high</i> )	No take		
			Double Point State Marine Conservation Area ( <i>Moderate high</i> )	Salmon trolling and crab pots, commercial and recreational		
	Duxbury Reef State Marine Conservation Area ( <i>Moderate low</i> )	RECREATIONAL: red abalone, dungeness crab, rock crab, rockfish (Scorpaenidae), lingcod, cabezon, surfperch (Embiotocidae), halibut, flounder, sole, turbot, salmon, kelp greenling, striped bass, steelhead, monkeyface eel, wolf eel, smelt and silversides COMMERCIAL: take of species other than giant & bull kelp is allowed	Duxbury Reef State Marine Conservation Area ( <i>Moderate</i> )	salmon trolling & dungeness crab pots (both commercial and recreational), halibut commercial by boat, recreational finfish fishing from shore.		
			Bolinas Lagoon State Marine Reserve ( <i>Very high</i> )	No take		

**California Marine Life Protection Act Initiative**  
**Comparison of Proposed Regulations in Draft MPA Proposals for the North Central Coast Study Region**  
*Revised February 1, 2008*

	Draft Proposal 3 (TC) (12/12/07 version)		Draft Proposal 4 (JC) (12/12/07 version)		Draft External Proposal A (01/02/08 version)	
	MPA Name ( <i>Level of Protection</i> )	Proposed Regulations	MPA Name ( <i>Level of Protection</i> )	Proposed Regulations	MPA Name ( <i>Level of Protection</i> )	Proposed Regulations
<b>Subregion 4: Double Point to Point San Pedro</b>	Duxbury State Marine Reserve ( <i>Very high</i> )	No take	Double Point State Marine Reserve ( <i>Very high</i> )	No take		
	Duxbury State Marine Conservation Area ( <i>Moderate-high</i> )	Salmon trolling and crab trap, commercial and recreational	Double Point State Marine Conservation Area ( <i>Moderate high</i> )	Salmon trolling and crab traps, commercial and recreational		
			Duxbury Reef State Marine Conservation Area ( <i>Moderate</i> )	salmon trolling & dungeness crab traps (both commercial & recreational), commercial halibut by boat, recreational finfish shorefishing		
	Bolinas State Marine Reserve ( <i>Very high</i> )	No take			Bolinas Lagoon State Marine Reserve ( <i>Very high</i> )	No take