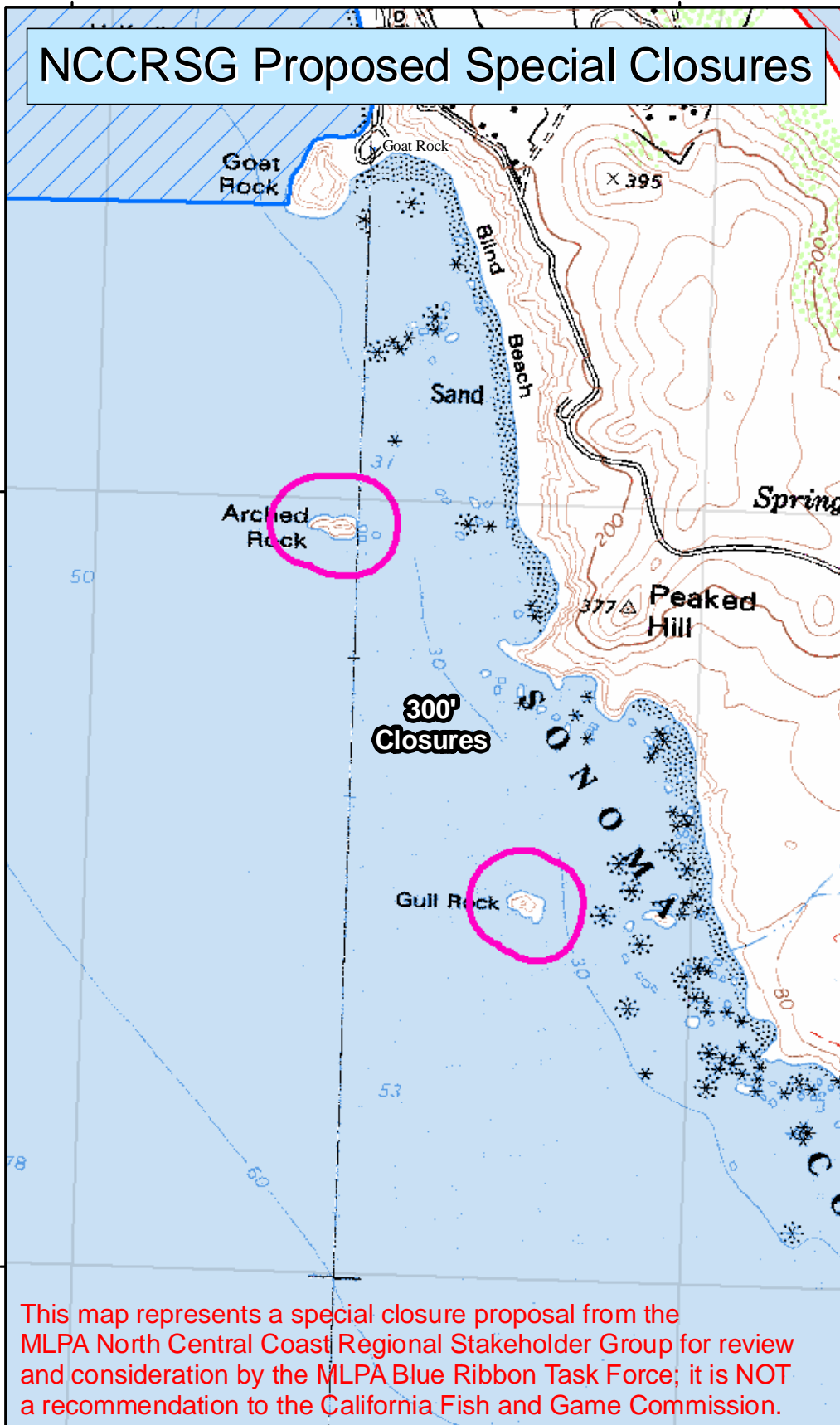


# NCCRSG Proposed Special Closures

38°26'0"N

38°25'0"N



This map represents a special closure proposal from the MLPA North Central Coast Regional Stakeholder Group for review and consideration by the MLPA Blue Ribbon Task Force; it is NOT a recommendation to the California Fish and Game Commission.

## Marine Life Protection Act



- ) Coastal Access Points
- Proposed SMCA
- Proposed SMP
- Proposed SMR
- Proposed SMRMA
- Proposed Special Closure

California Department of Fish and Game  
Marine Region GIS Lab, Apr 15, 2008

0 0.05  
Miles



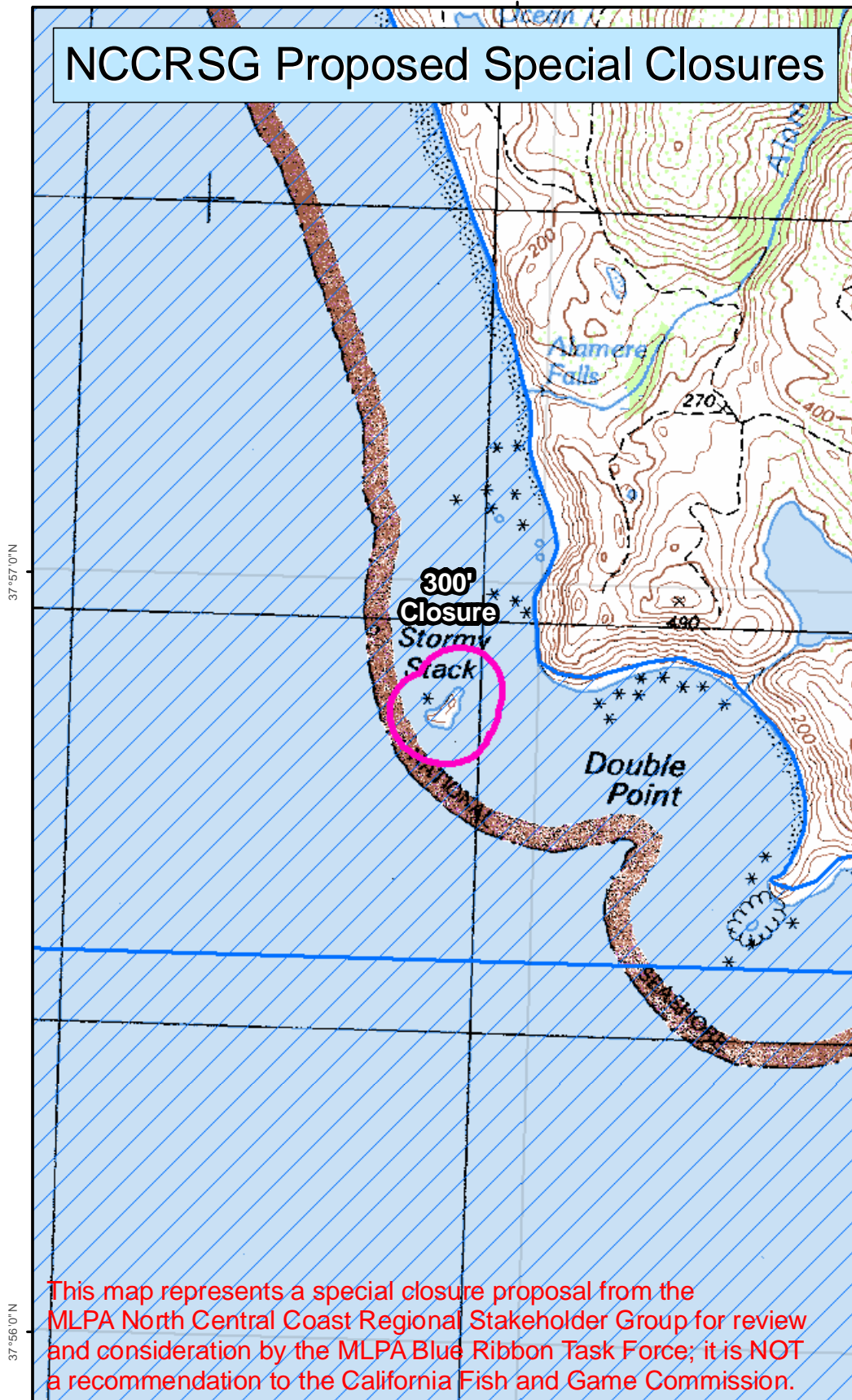
## Arched and Gull Rocks NCCRSG Proposal 4

This Special Closure proposal was finalized on March 19, 2008 by a work team of the MLPA North Central Coast Regional Stakeholder Group (NCCRSG) and is being submitted to the MLPA Blue Ribbon Task Force for consideration. Further information on each Special Closure proposal can be found in the associated text document with the same Special Closure proposal name.





# NCCRSG Proposed Special Closures



This map represents a special closure proposal from the MLPA North Central Coast Regional Stakeholder Group for review and consideration by the MLPA Blue Ribbon Task Force; it is NOT a recommendation to the California Fish and Game Commission.

## Marine Life Protection Act



- ) Coastal Access Points
- Proposed SMCA
- Proposed SMP
- Proposed SMR
- Proposed SMRMA
- Proposed Special Closure

California Department of Fish and Game  
Marine Region GIS Lab, Apr 15, 2008

0 0.04  
Miles



## Stormy Stack NCCRSG Proposal 4

This Special Closure proposal was finalized on March 19, 2008 by a work team of the MLPA North Central Coast Regional Stakeholder Group (NCCRSG) and is being submitted to the MLPA Blue Ribbon Task Force for consideration. Further information on each Special Closure proposal can be found in the associated text document with the same Special Closure proposal name.



# NCCRSNG Proposed Special Closures

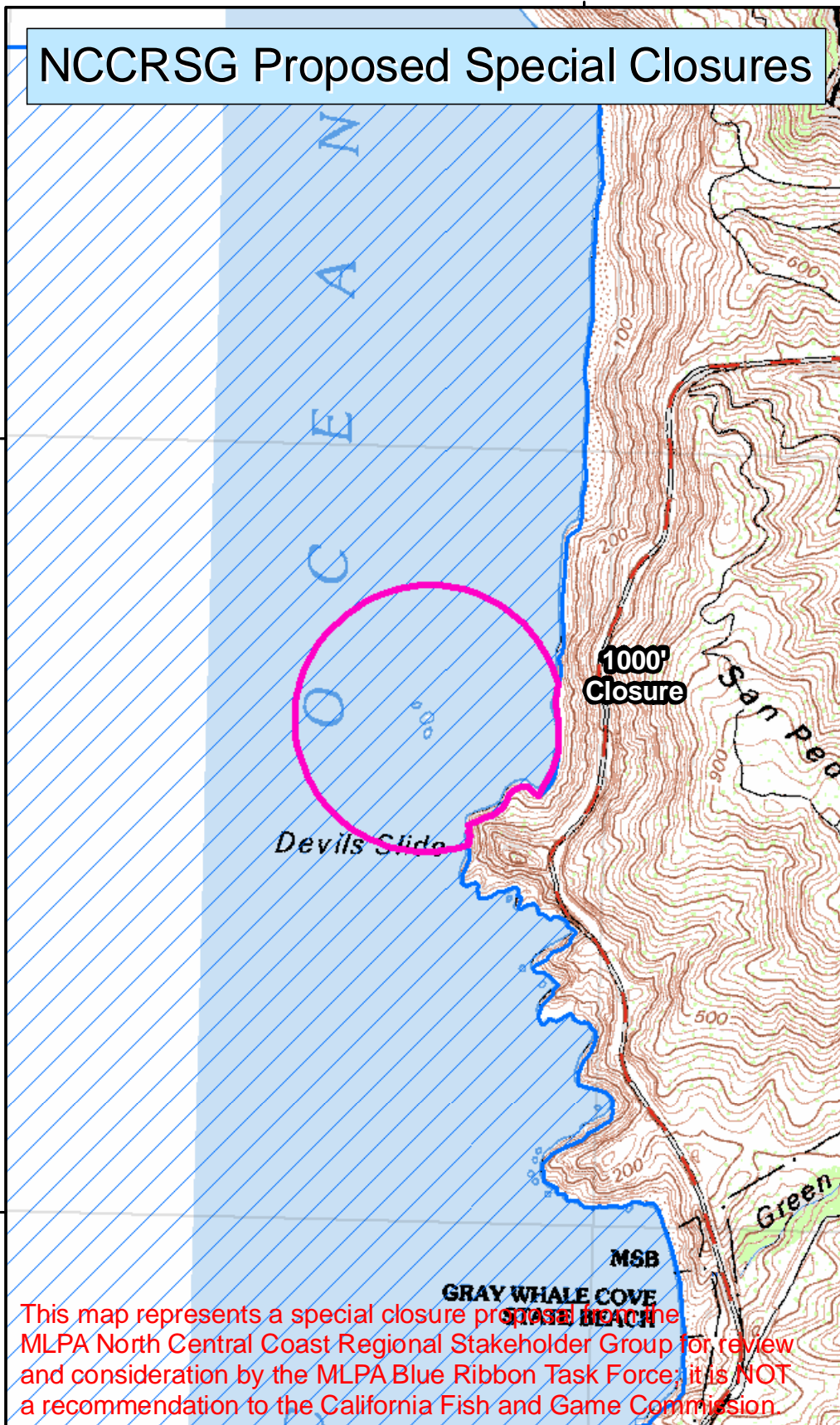
Marine Life Protection Act



- ) Coastal Access Points
- Proposed SMCA
- Proposed SMP
- Proposed SMR
- Proposed SMRMA
- Proposed Special Closure

37°35'0"N

37°34'0"N



This map represents a special closure proposal from the MLPA North Central Coast Regional Stakeholder Group for review and consideration by the MLPA Blue Ribbon Task Force; it is NOT a recommendation to the California Fish and Game Commission.

California Department of Fish and Game  
 Marine Region GIS Lab, Apr 15, 2008

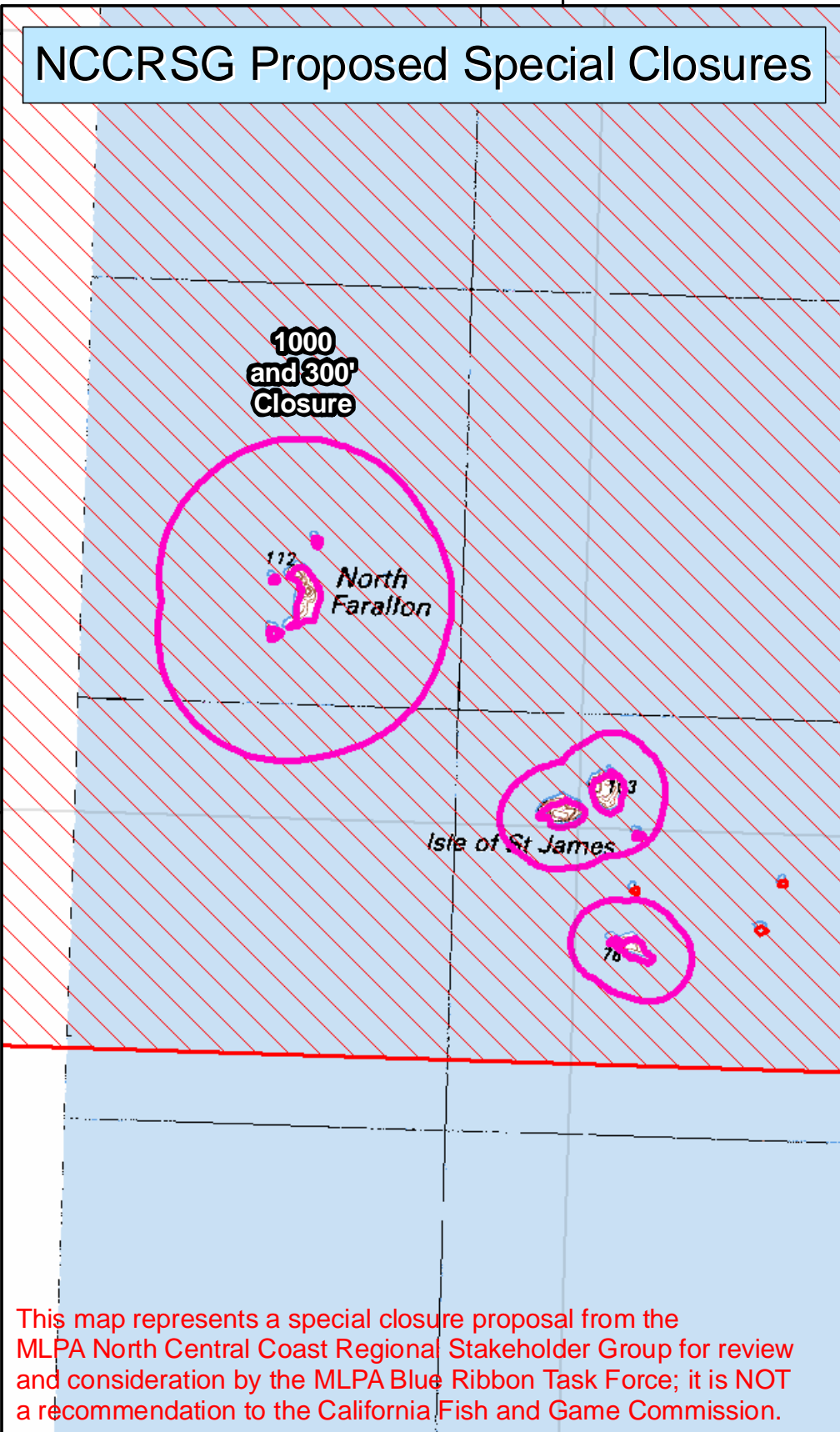


## Egg Rock NCCRSNG Proposal 4

This Special Closure proposal was finalized on March 19, 2008 by a work team of the MLPA North Central Coast Regional Stakeholder Group (NCCRSNG) and is being submitted to the MLPA Blue Ribbon Task Force for consideration. Further information on each Special Closure proposal can be found in the associated text document with the same Special Closure proposal name.



# NCCRSG Proposed Special Closures



This map represents a special closure proposal from the MLPA North Central Coast Regional Stakeholder Group for review and consideration by the MLPA Blue Ribbon Task Force; it is NOT a recommendation to the California Fish and Game Commission.

## Marine Life Protection Act



- ) Coastal Access Points
- Proposed SMCA
- Proposed SMP
- Proposed SMR
- Proposed SMRMA
- Proposed Special Closure

California Department of Fish and Game  
Marine Region GIS Lab, Apr 15, 2008



### North Farallons *NCCRSG Proposal 4*

This Special Closure proposal was finalized on March 19, 2008 by a work team of the MLPA North Central Coast Regional Stakeholder Group (NCCRSG) and is being submitted to the MLPA Blue Ribbon Task Force for consideration. Further information on each Special Closure proposal can be found in the associated text document with the same Special Closure proposal name.

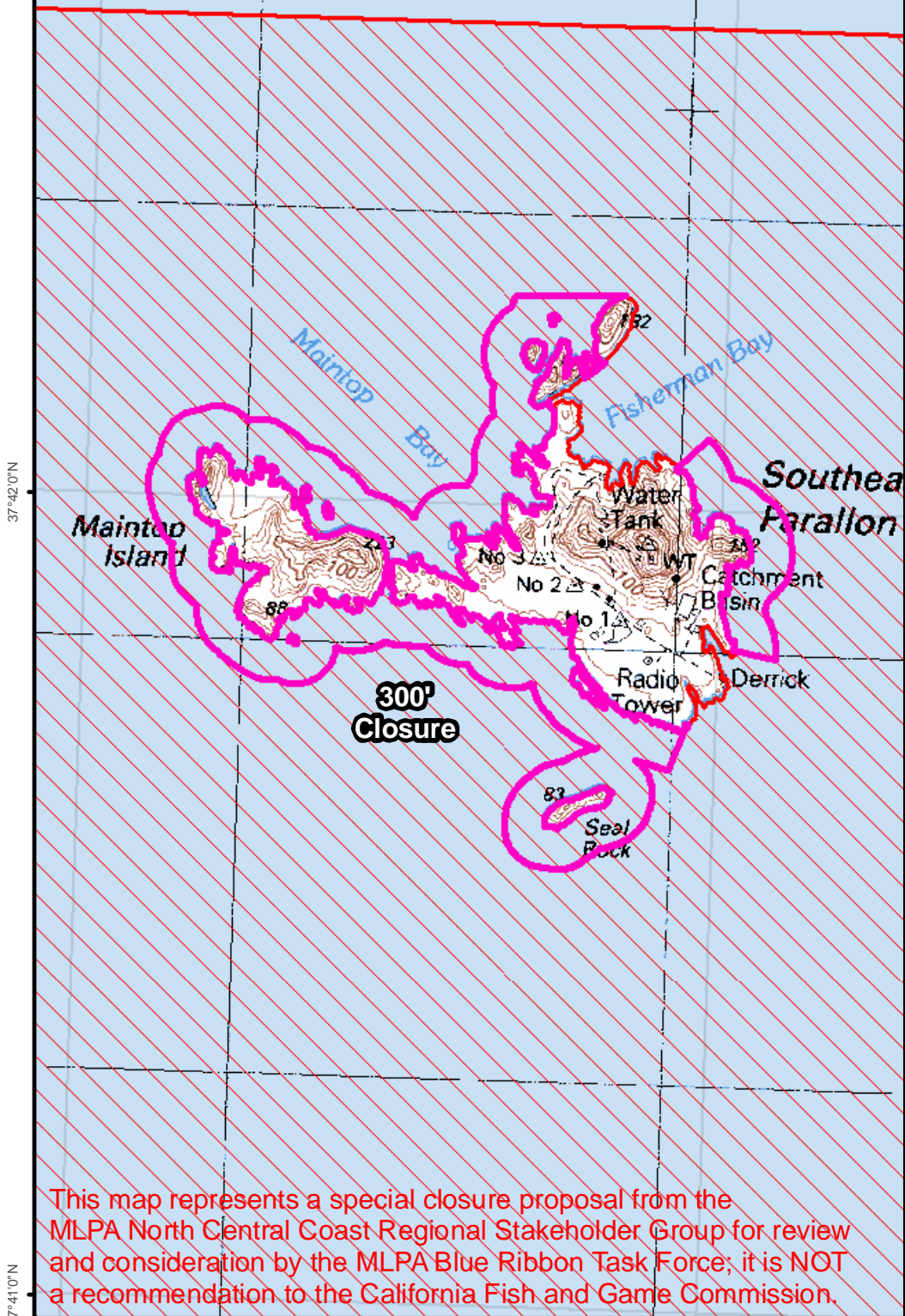


# NCCRSG Proposed Special Closures

Marine Life Protection Act



- Coastal Access Points
- Proposed SMCA
- Proposed SMP
- Proposed SMR
- Proposed SMRMA
- Proposed Special Closure



This map represents a special closure proposal from the MLPA North Central Coast Regional Stakeholder Group for review and consideration by the MLPA Blue Ribbon Task Force; it is NOT a recommendation to the California Fish and Game Commission.

California Department of Fish and Game  
 Marine Region GIS Lab, Apr 15, 2008



## South Farallons NCCRSG Proposal 4

This Special Closure proposal was finalized on March 19, 2008 by a work team of the MLPA North Central Coast Regional Stakeholder Group (NCCRSG) and is being submitted to the MLPA Blue Ribbon Task Force for consideration. Further information on each Special Closure proposal can be found in the associated text document with the same Special Closure proposal name.

