



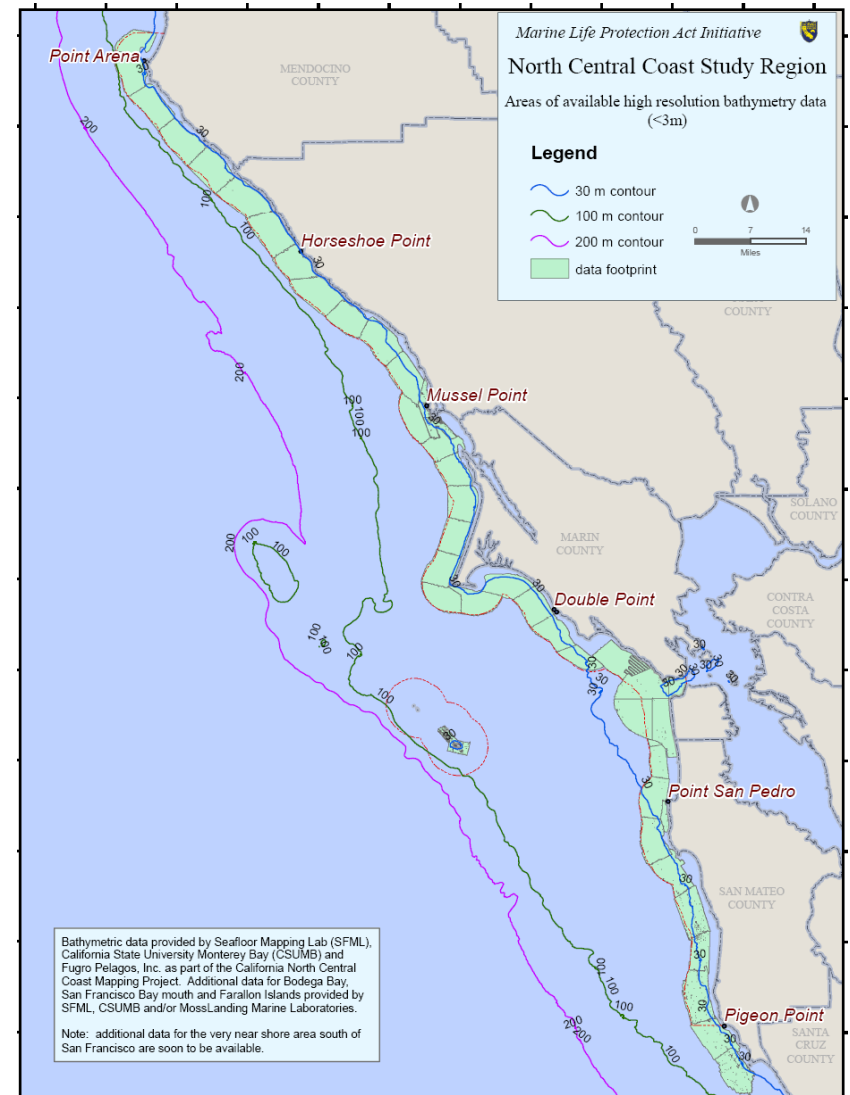
Update on Seafloor Mapping Data

**Presentation to the MLPA North Central Coast
Regional Stakeholder Group
San Rafael, CA • August 22, 2007**

**Paulo Serpa, GIS Analyst
California Department of Fish and Game**

Seafloor Habitats and Depth Zones

- Fine-scale seafloor mapping using multi-beam sonar and LIDAR methods almost complete (Kvitek et al.)
- Most but not all of region was contracted to be mapped (parts of Farallons and some nearshore areas not surveyed)
- Still doing some cleanup of data
- Preliminary data in hand and available for planning, but will be updated over the next month

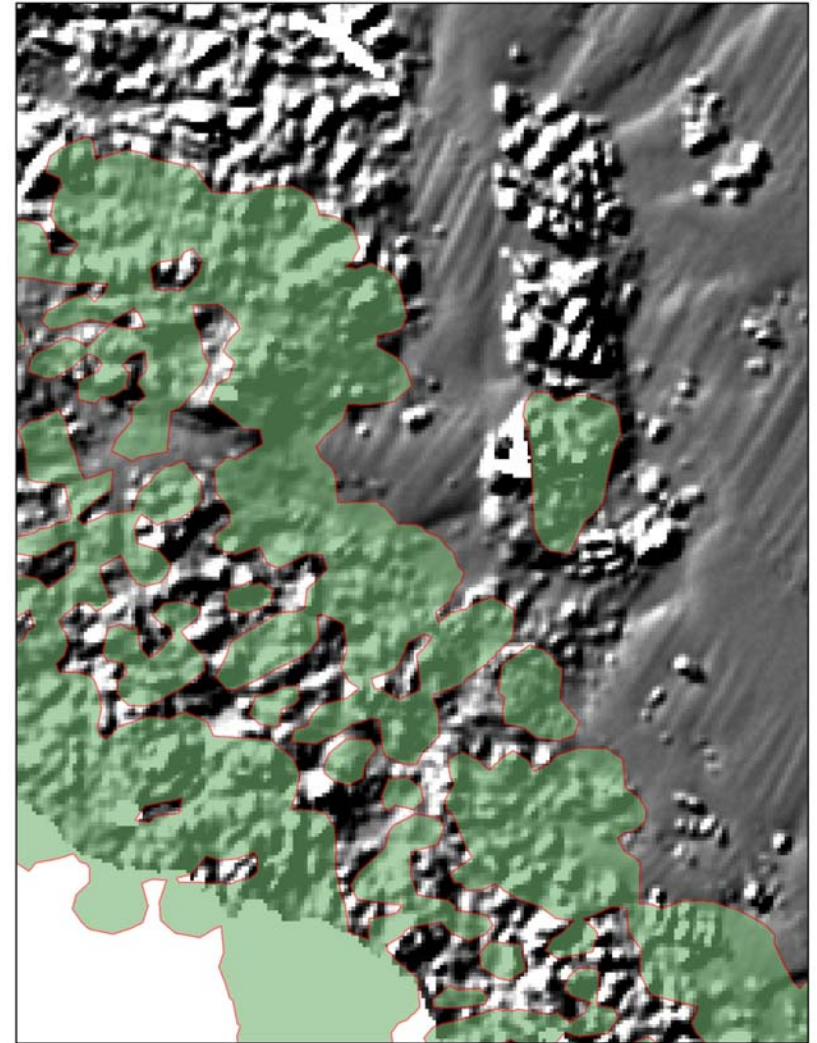




Seafloor Habitats and Depth Zones

Filling in areas not surveyed by:

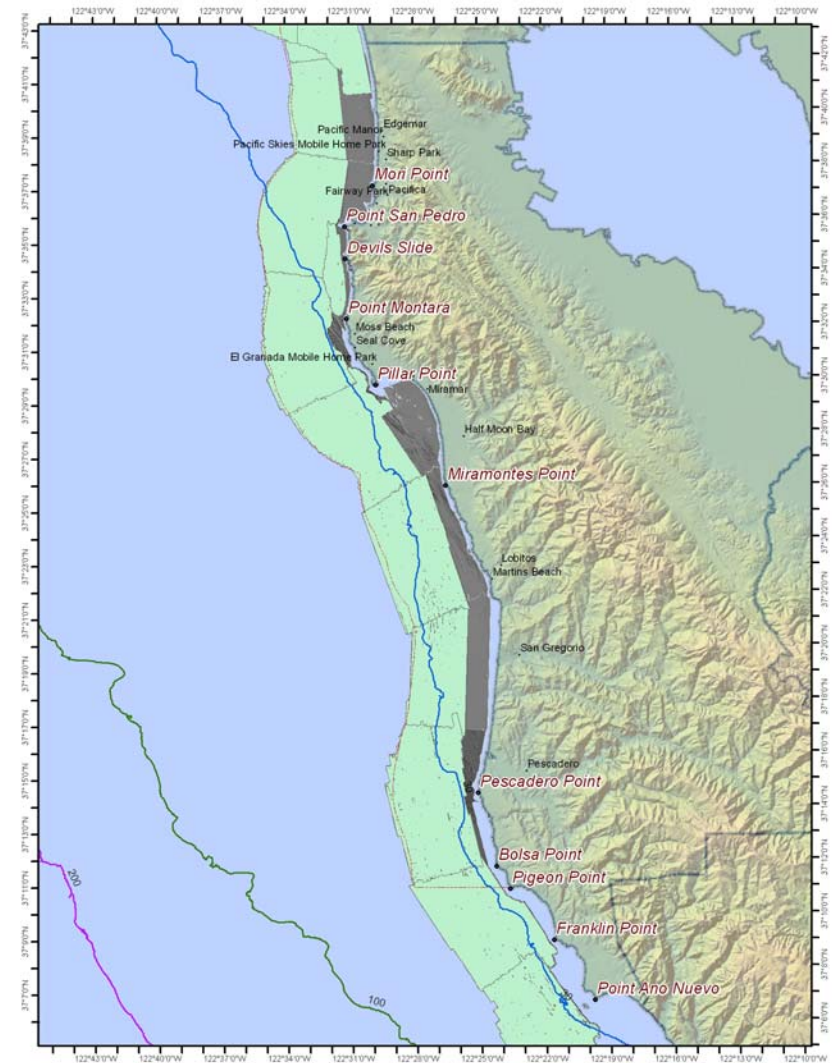
- Using kelp as a proxy for rock in nearshore (<20m) north of Bolinas
- Final mapping of some near-shore areas (not all)
- Assuming estuaries are soft bottom
- Utilizing existing fine-scale plus some coarse scale data for Farallons subregion



Seafloor Habitats and Depth Zones

Filling in areas not surveyed by:

- Using kelp as a proxy for rock in nearshore (<20m) north of Bolinas
- Final mapping of some near-shore areas (not all)
- Assuming estuaries are soft bottom
- Utilizing existing fine-scale plus some coarse scale data for Farallons subregion

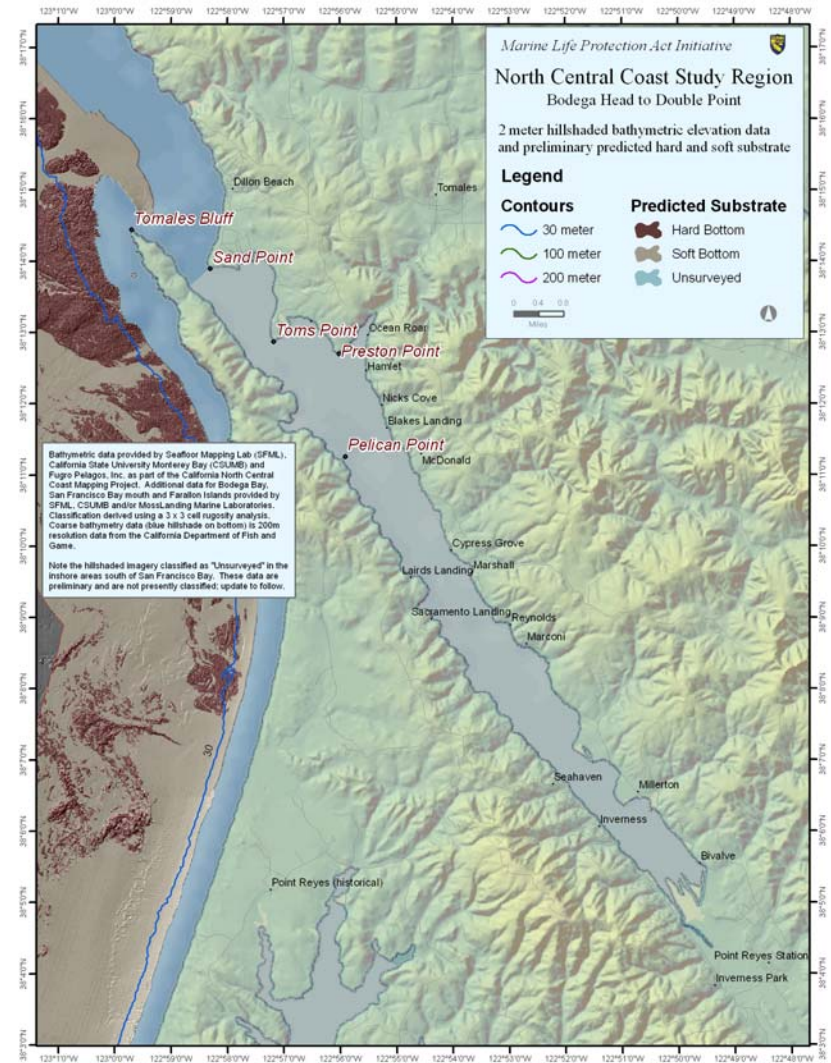




Seafloor Habitats and Depth Zones

Filling in areas not surveyed by:

- Using kelp as a proxy for rock in nearshore (<20m) north of Bolinas
- Final mapping of some near-shore areas (not all)
- Assuming estuaries are soft bottom
- Utilizing existing fine-scale plus some coarse scale data for Farallons subregion

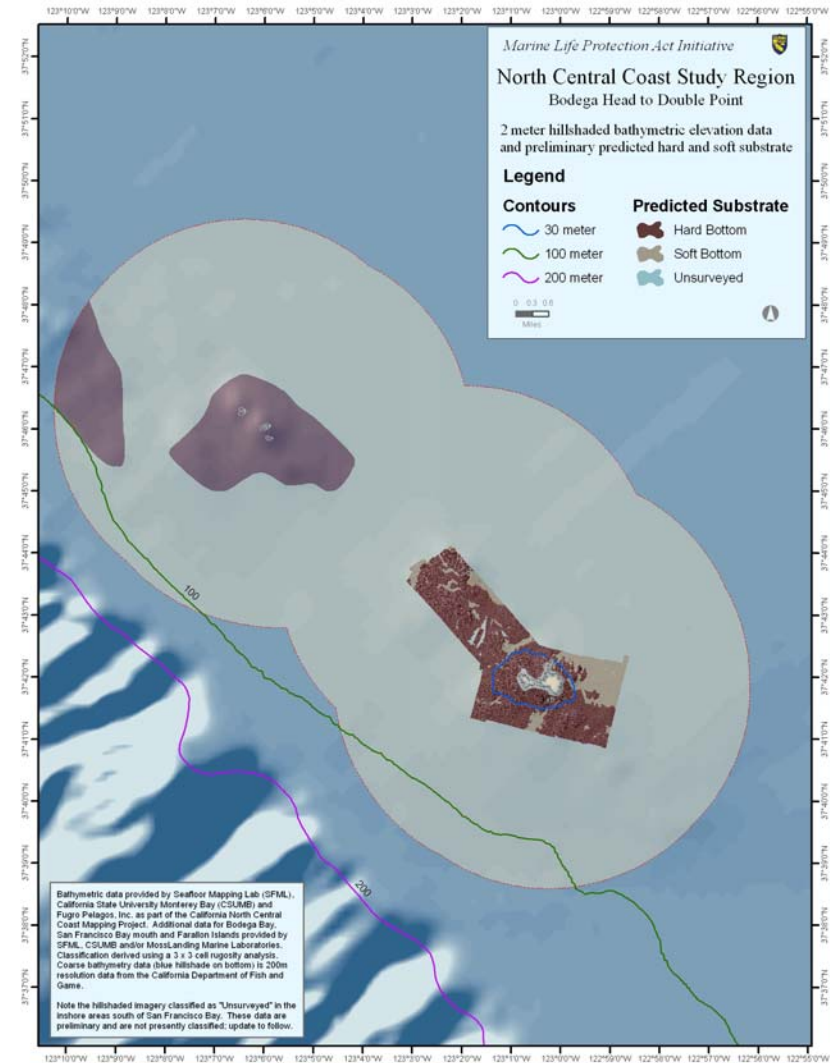




Seafloor Habitats and Depth Zones

Filling in areas not surveyed by:

- Using kelp as a proxy for rock in nearshore (<20m) north of Bolinas
- Final mapping of some near-shore areas (not all)
- Assuming estuaries are soft bottom
- Utilizing existing fine-scale plus some coarse scale data for Farallons subregion



Seafloor Habitats and Depth Zones



PRELIMINARY classification of fine-scale data

- Overall, 74% soft / 11% hard, but 15% unknown

	0-30m	30-100m	100-200m
Soft	29%	44%	1%
Hard	5%	6%	0%
Unk.	14%	<1%	0%

