

Marine Life Protection Act Initiative



Staff Evaluation of Draft Marine Protected Area Proposals

Presentation to the MLPA North Central Coast Regional Stakeholder Group

Evan Fox, Assistant Marine Planner • California MLPA Initiative

February 21, 2008 • San Rafael, CA



Evaluation/Summary Documents

| Document | Source |
|--|---------------|
| Proposal Templates and Maps | Staff/RSG |
| Habitat Calculations | Staff |
| Staff Summaries | Staff |
| Area Histograms | Staff |
| Side-by-side Maps and Regulations | Staff |
| Goal 3 Analysis | Staff |
| | |
| Feasibility Analysis | DFG |
| Abalone Analysis | DFG |
| Commercial/ Recreational Fishing Analysis (Ecotrust) | DFG |
| | |
| MLPA Goals 1-4 Analysis (Habitat Representation) | SAT |
| MLPA Goals 2-6 Analysis (Size and Spacing) | SAT |
| Birds and Mammals Analysis | SAT |



Proposal Templates – Some feedback

Capturing basic information for final proposals (Round 3):

- Rationale for proposal (need this in Round 3, < 1 page)
- Proposed disposition of existing MPAs (retain, modify, eliminate)

For each proposed MPA:

- MPA name
- MPA boundaries (provide lat/long coordinates for all four corners!)
- Allowed/disallowed uses (more clarity on recreational and/or commercial take, species included, and any gear restrictions)
- SAT level of protection (assigned by SAT)
- Regional goals and objectives MPA contributes toward
- MPA-specific objectives
- Comments (explanation if not meeting feasibility or science guidelines)

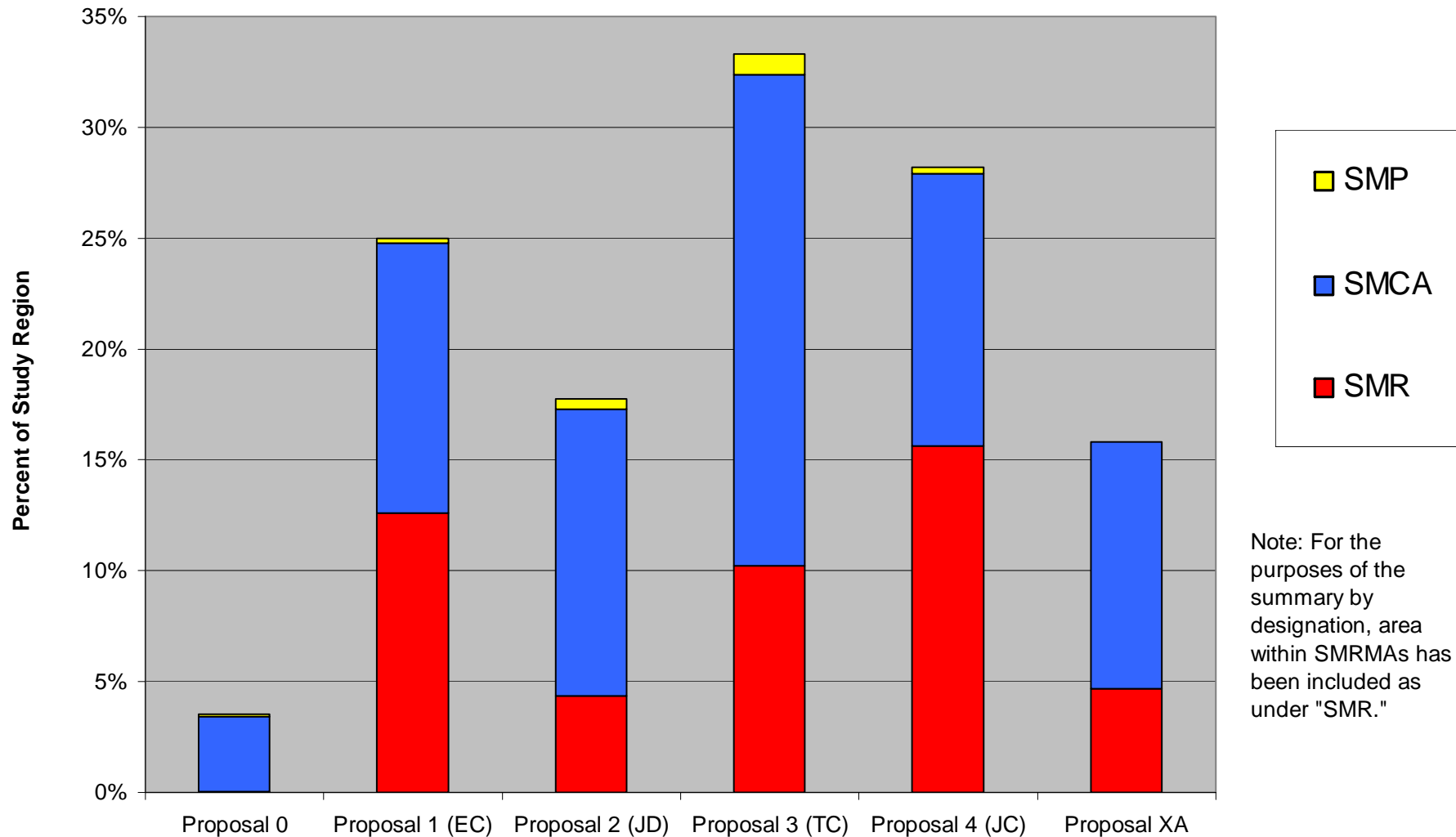


Habitat Calculations, Size and Spacing

- Providing basic info to SAT for its evaluation
- Amount of habitat captured within each MPA (habitat calculation spreadsheets)
- Habitats present in sufficient amount to be represented in MPAs and included in replication analysis
- Size of MPAs (and MPA clusters) by level of protection
- Spacing of habitats represented in MPAs by level of protection
- Thanks to co-leads for reviewing calculations and being part of quality control process!

Area Analysis – by designation

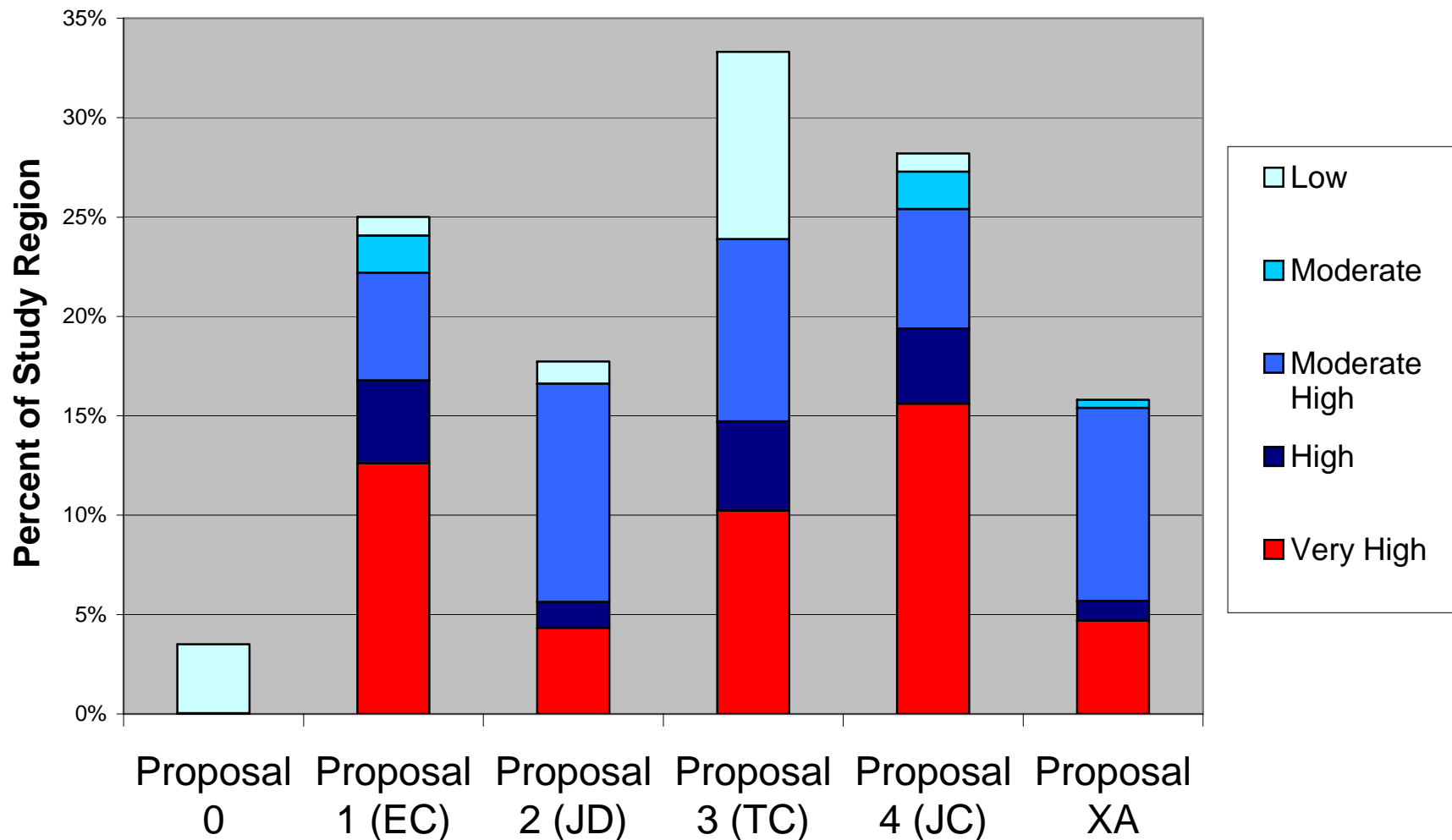
Draft MPA Proposals and Existing MPAs (Proposal 0) by Designation



Note: For the purposes of the summary by designation, area within SMRMAs has been included as under "SMR."

Area Analysis – by level of protection

Draft MPA Proposals and Existing MPAs (Proposal 0) by SAT Level of Protection



Side-by-side Maps and Regulations

Comparison across draft MPA proposals

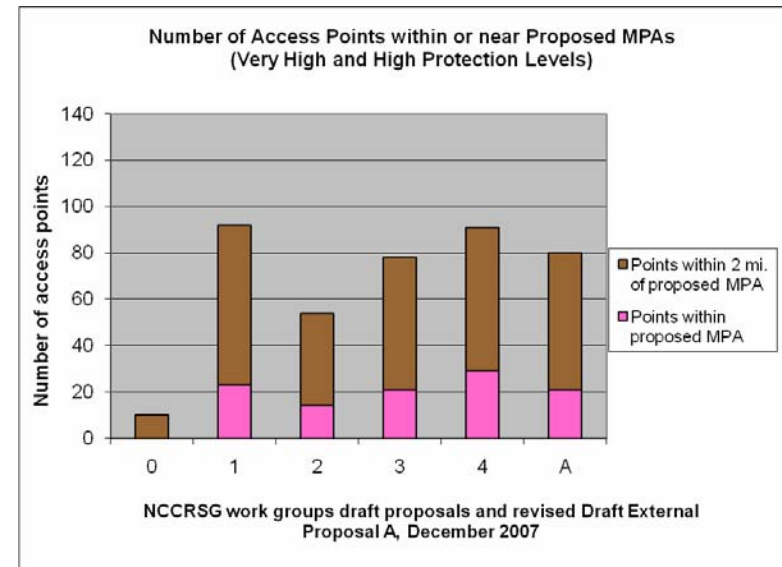
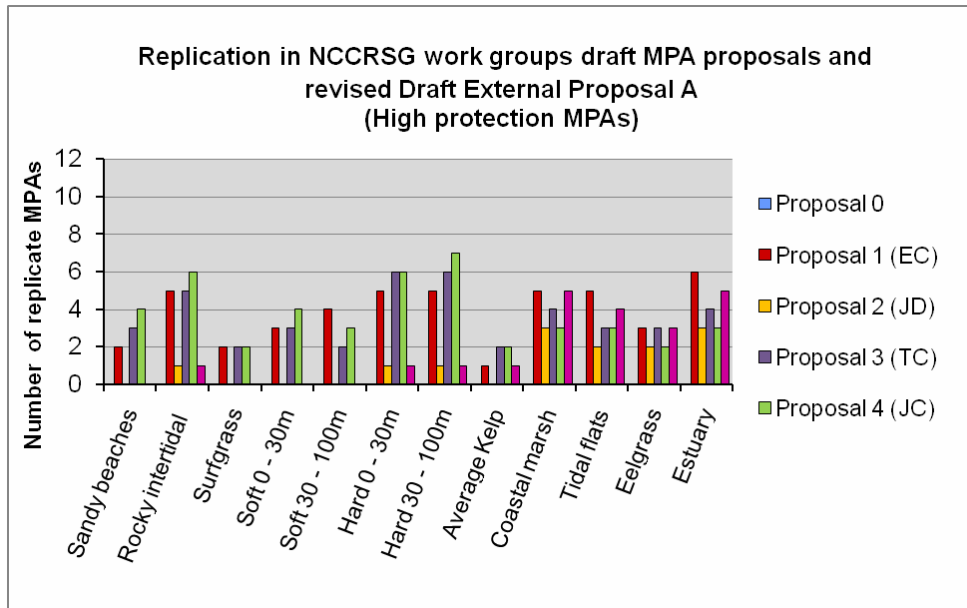


| Point San Pedro to Pigeon Point (Subregion 5) | Draft Proposal 3 (TC) (12/12/07 version) | | Draft Proposal 4 (JC) (12/12/07 version) | | Draft External Proposal A (01/02/08 version) | |
|---|---|---|--|---|--|----------------------|
| | MPA Name (Level of Protection) | Proposed Regulations | MPA Name (Level of Protection) | Proposed Regulations | MPA Name (Level of Protection) | Proposed Regulations |
| | Moss Beach State Marine Reserve (<i>Very high</i>) | No take | Fitzgerald- Devil's Slide State Marine Reserve (<i>Very high</i>) | No take | Fitzgerald State Marine Reserve (<i>Very high</i>) | No take |
| Moss Beach State Marine Conservation Area | Salmon trolling, crab, and squid, commercial and recreational | Fitzgerald- Devils Slide State Marine Conservation Area | Salmon trolling, crab, coastal pelagics, and squid (commercial & recreational) | Fitzgerald State Marine Conservation Area | Salmon trolling, anchovy, sardine, herring, dungeness crab (All applies) | |



Goal 3 Analysis

Recreational, educational, and study opportunities – see memo for details





Summary

- Staff analyses and summaries present basic information and statistics
- Provide basis for other evaluations
- Goal 3 analysis addresses MLPA goal not assessed by science advisory team