



# Marine Life Protection Act



## Evaluation of the Potential Impact MPA Proposals May Pose for Recreational Abalone Fisheries and Abalone Management in the MLPA North Central Coast Study Region

Presentation to the MLPA Blue Ribbon Task Force

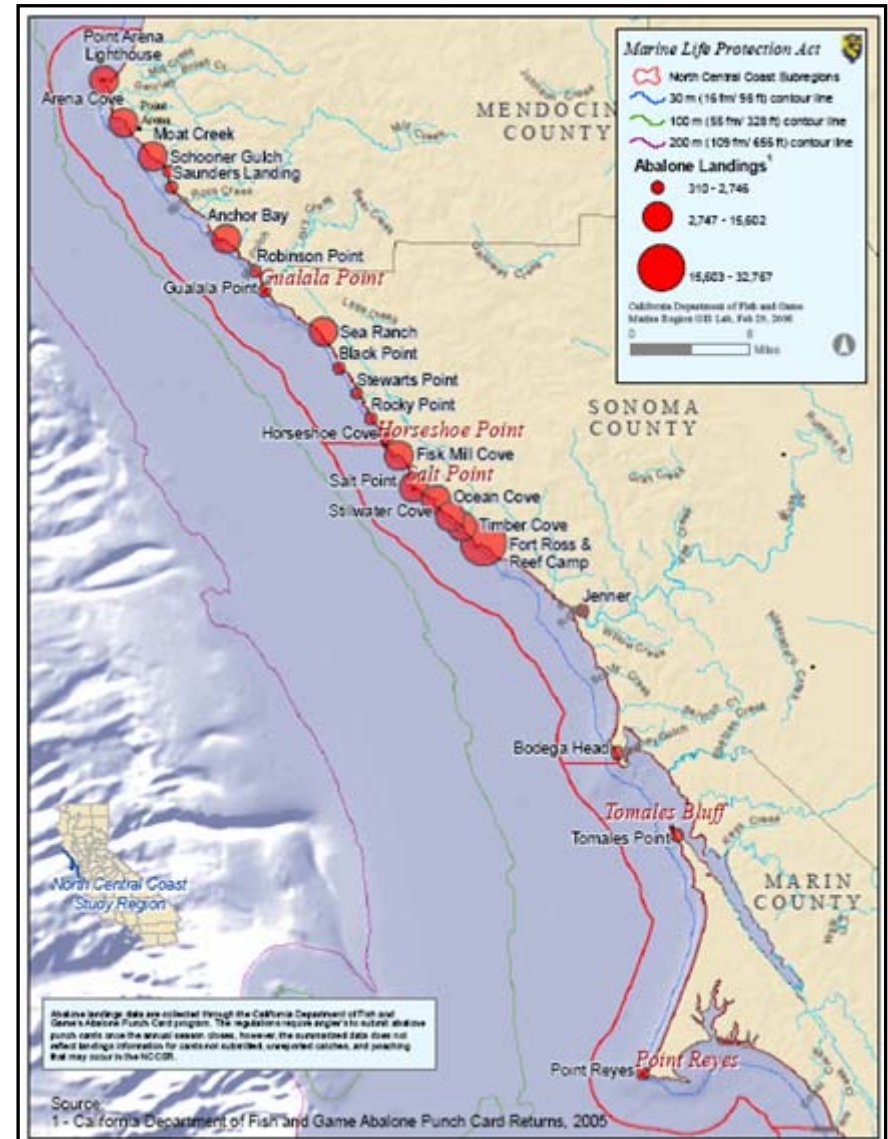
April 22, 2008 • San Rafael, CA

Susan Ashcraft

California Department of Fish and Game

# Recreational Abalone Harvest

- Significant recreational abalone fishery in North Central Coast Study Region
  - 2002-2006: Annual harvest averaged >134,000 abalone
  - 24 “Report Card Landing Sites” in the NCCSR
  - No commercial fishery in the state

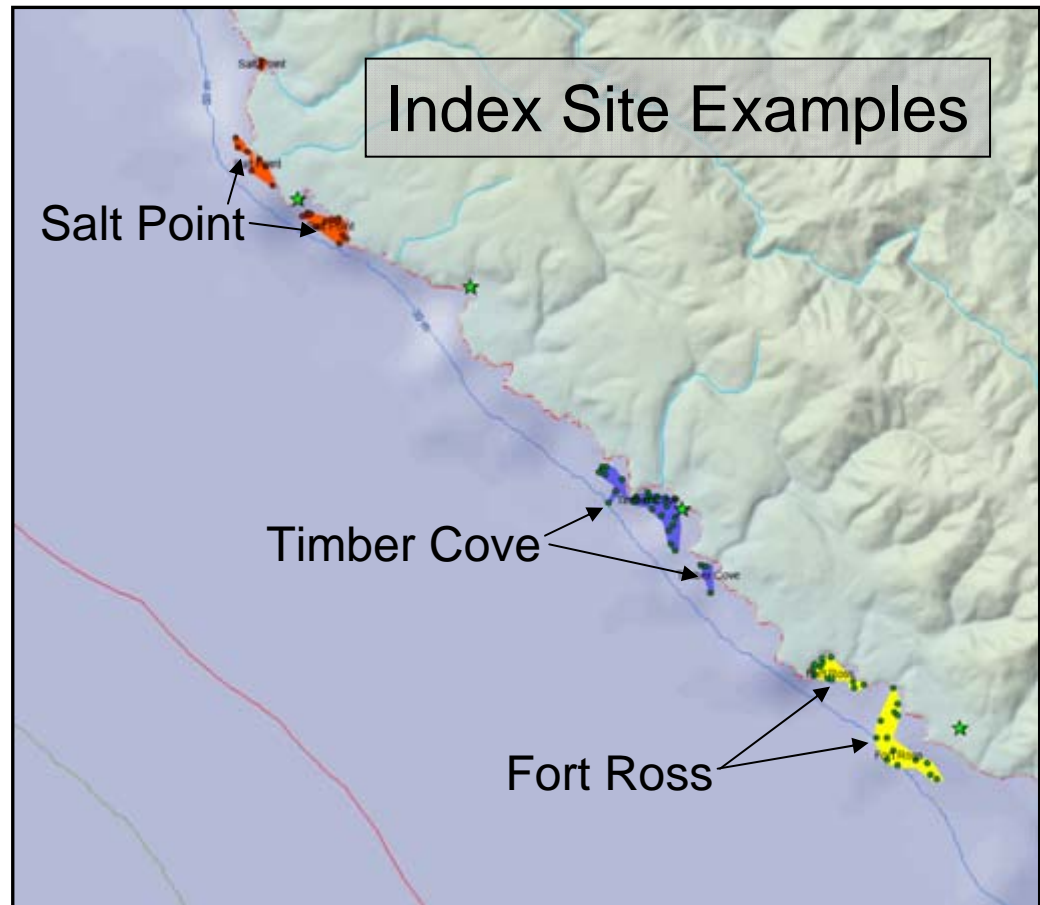




# Abalone Management

## Potential Impacts to Management

- Index sites = Areas of high or moderate fishing pressure which are used as long-term underwater and intertidal survey sites
- No proposals encompass any existing abalone index sites





# Recreational Abalone Estimates

- Evaluation provides maximum potential impacts to recreational harvest in study region
  1. Landing sites from Department abalone report card
  2. Anglers must report harvested abalone to nearest landing site
  3. Evaluation - % harvest potentially impacted by MPAs that prohibit abalone take (2002-06)
  4. Assumes harvesters do not move to a new location





# Point Arena Lighthouse Landing Site

- Point Arena Lighthouse landing site contains Stornetta Ranch
- Public gained access to Stornetta Ranch in mid-2004
  - 2006 harvest at Point Arena Lighthouse: >10x higher than 2002 & 2003

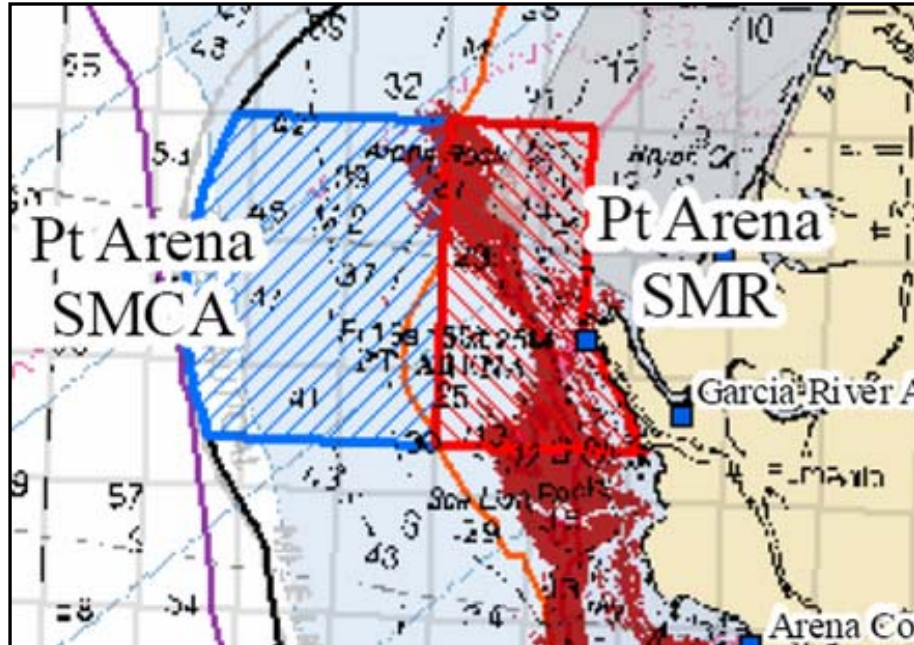




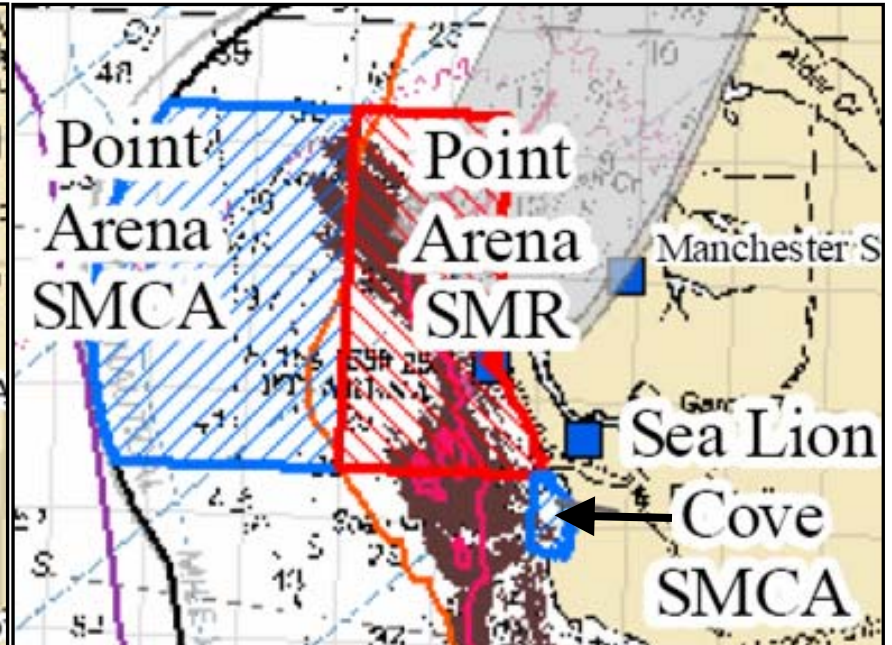
# Stornetta Ranch (Sea Lion Cove)

- Potential impact from Proposal 1-3 and 2-XA is likely different from Proposal 4, which includes Sea Lion Cove SMCA

**Final Proposal 1-3**



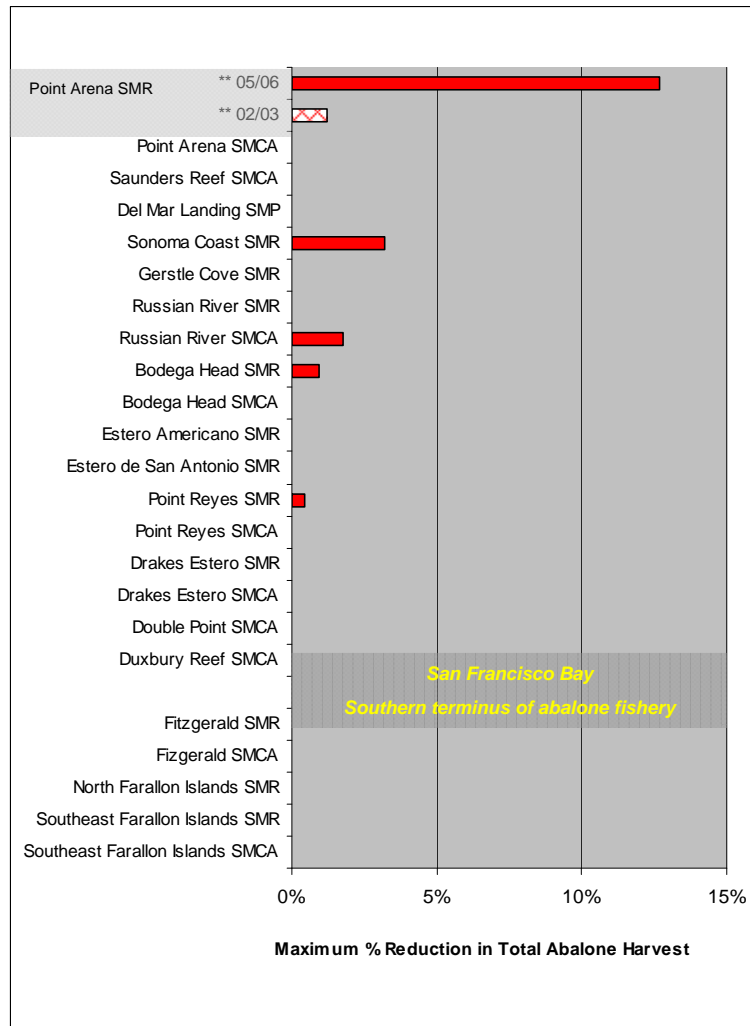
**Final Proposal 4**



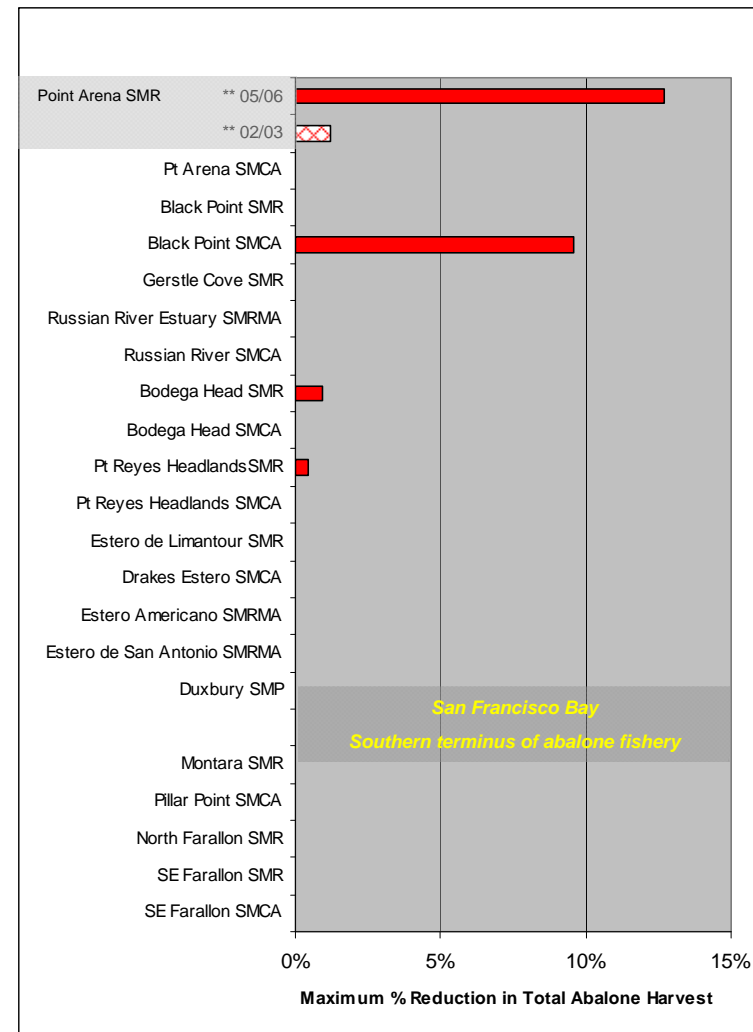


# Maximum Potential Impact to Abalone Harvest Based on 2002-2006 Abalone Report Card Data for the NCCSR

## Final Proposal 1-3



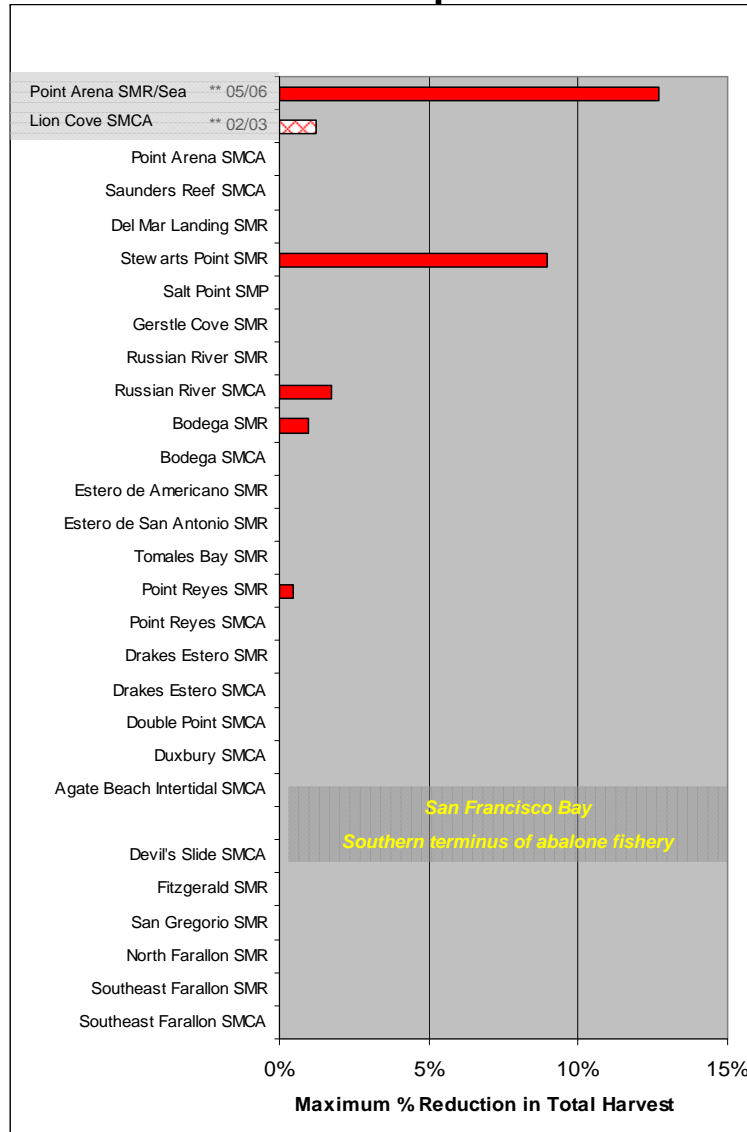
## Final Proposal 2XA





# Maximum Potential Impact to Abalone Harvest Based on 2002-2006 Abalone Report Card Data for the NCCSR

## Final Proposal 4



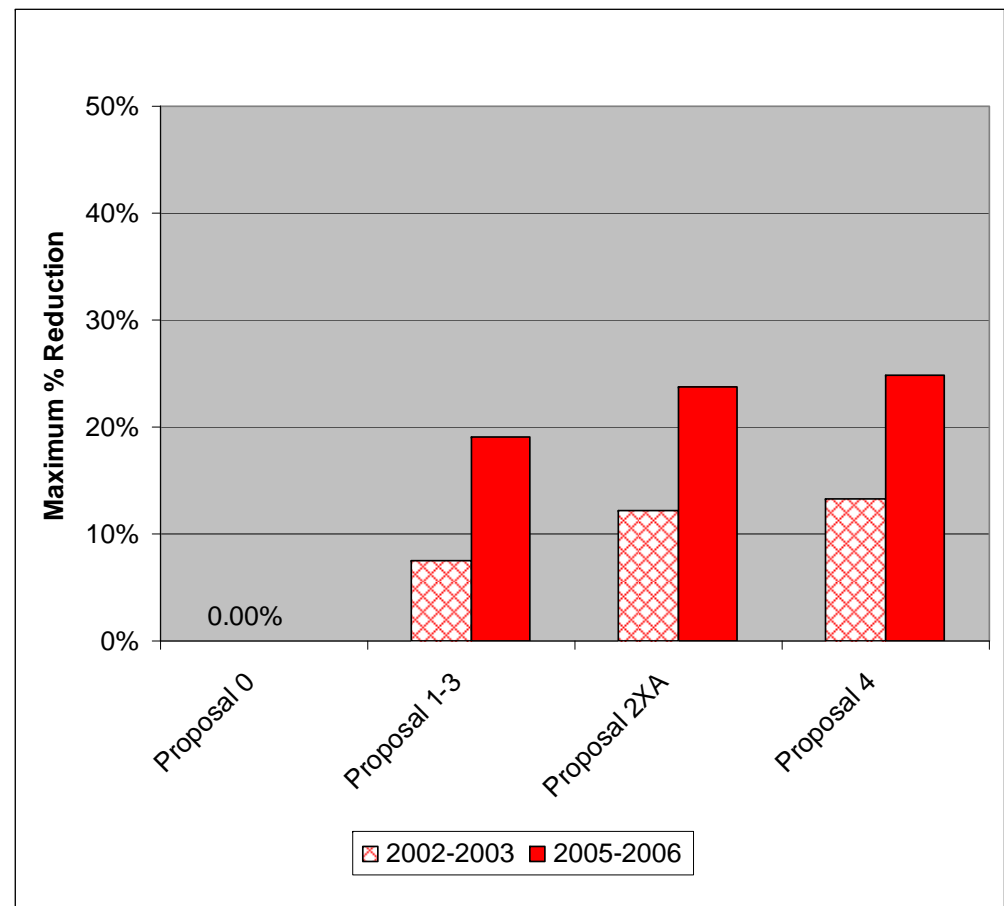




# Summary

- Maximum impacts relative to total harvest in the study region
- Proposal 4 includes part of Stornetta Ranch in an SMCA
- Proposal 1-3 has the least potential impact to recreational harvest of abalone

## Maximum Potential Impact to Recreational Abalone Harvest



# Questions?

