

Field Sampling Protocol for Isolating *E. coli* 0157:H7 from Deer (For Hunters)

Dear California Hunters,

In 2006, the human pathogenic strain of bacteria, *Escherichia coli* O157:H7, was isolated from wild pigs in San Benito County. This strain of *E. coli* can cause serious health problems in people. To date, very little scientific knowledge exists to determine if wildlife are a true source of contamination. The California Department of Fish and Game is collecting samples to determine if wild animals are carrying *E. coli* 0157:H7 and we appreciate your assistance in this effort. Please find the attached sampling kit and instructions on how to provide us a colon sample from your harvested animal. This information will help us better manage and protect wildlife and if necessary provide health safety information to hunters. We thank you for your cooperation.

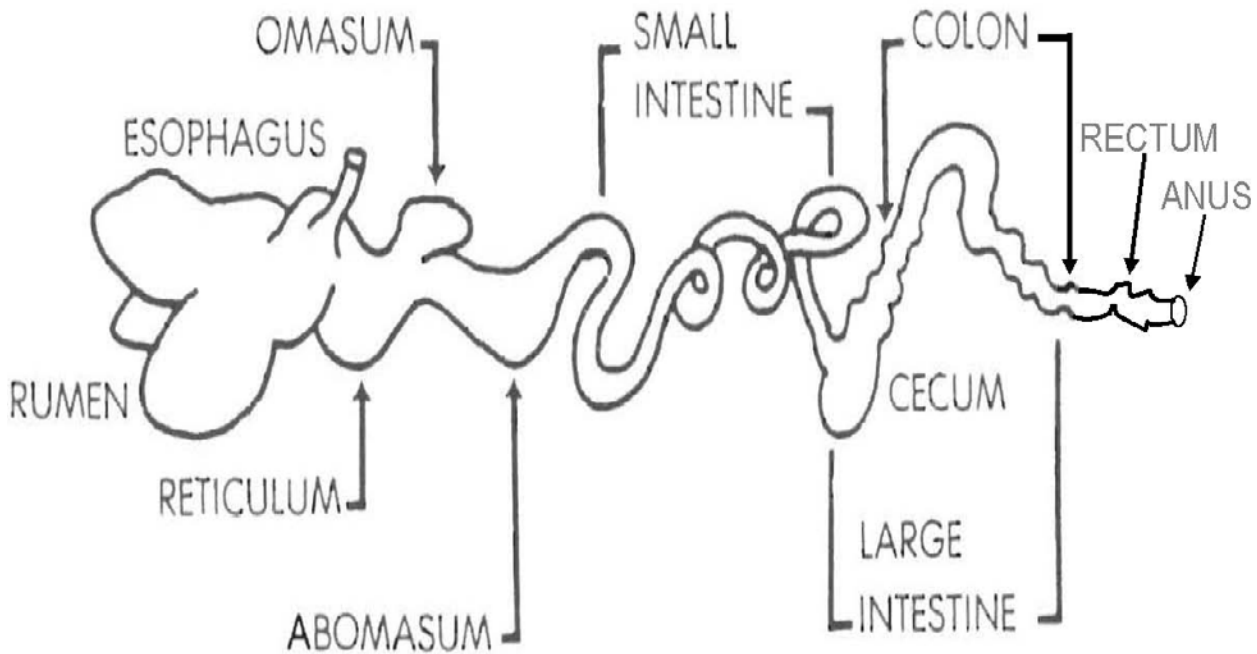
Equipment Kit (suggested items you'll need to take a sample)

Colon Samples: Surgical gloves, string or zip-ties, two clean sterile (new, unused) one-gallon zip-lock freezer bags, label, knife or other sharp instrument, cooler with ice. Instructions and diagram showing where the colon is located inside a deer (see page 2). Label should include sample number, animal species, sex, age, date, location (nearest town and county), tissue type, and telephone number and name of person collecting sample.

Colon: Tie-off a six-inch section of the large colon with two eighteen-inch pieces of string or with zip-ties. The colon is part of the large intestine, right before the rectum (the rectum is located in the pelvis). Cut the colon on the outside of the string or zip-tie and remove the tied-off colon from the cavity. Place the tied-off section of colon into a clean, sterile zip-lock labeled bag. Place the labeled bag with the sample into the second clean bag (doubled bagged). Place the bagged sample into a cooler with ice and maintain at 40° F (4° C). Do not freeze. If you have trouble locating the colon, please drop fresh feces from the anus or rectum into the bag. Do not collect any material that falls to the ground.

Call the Department of Fish and Game at (831) 649-2870 or (831) 663-2917 for information on drop point locations or to arrange for pick-up as soon as possible or see the drop-off information on the next page.

DEER



Source: Wallmo, O. C. 1981. Mule and Black-tailed Deer of North America. Wildlife Management Institute. University of Nebraska Press, Lincoln, Nebraska. 605 pp.

CONTACTS AND DROP-OFF LOCATIONS

Once you have collected your sample according to the instructions provided, please take it to one of the following drop-off locations. Call the contact person in advance to alert them you will be making a drop-off.

King City Contact Matt Kelly (831) 710-1322 or Bob Martin (831) 595-1554. Rio Farms Office at First and Lonoak Road.

Directions: First Street Exit; left over the highway. Turn right onto Lonoak Road and make the immediate left into the equipment yard / office area.

Gonzales Contact Kek Flores at (831) 970-7073 for directions to the drop-off location.

Salinas Contact Traci Roberts at (831) 750-5875. Monterey County Farm Bureau Office at 931 Blanco Circle.

Directions: From north of Salinas, take the Sanborn St. exit. Go right onto Sanborn which becomes Blanco Road. Cross Abbott Street and take the next right onto Blanco Circle. Farm Bureau office is on the right.

Contact Mike Silva (831) 595-0102.