






DO NOT USE FOR NAVIGATIONAL PURPOSES

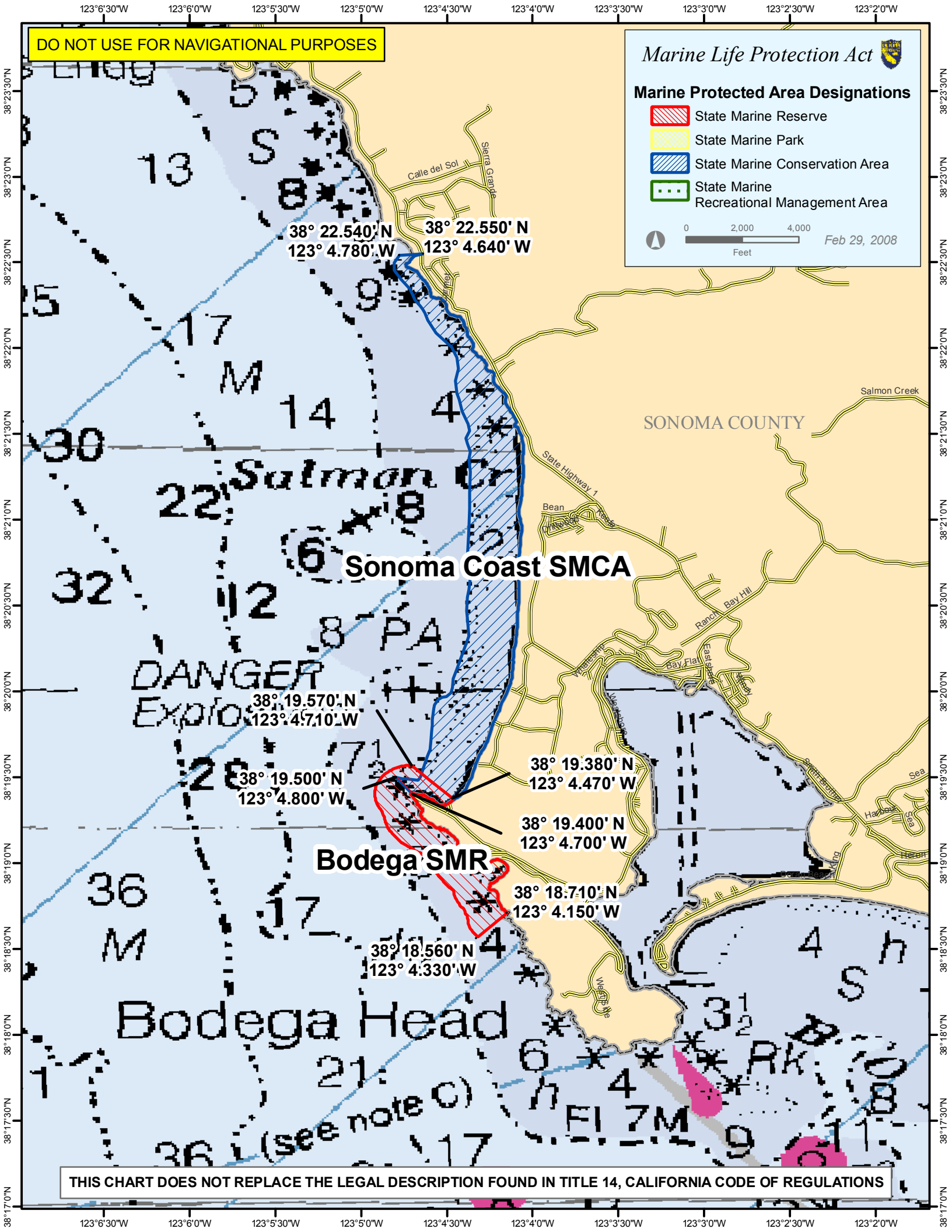
*Marine Life Protection Act* 

**Marine Protected Area Designations**

-  State Marine Reserve
-  State Marine Park
-  State Marine Conservation Area
-  State Marine Recreational Management Area

0 2,000 4,000  
Feet

Feb 29, 2008



38° 22.540' N 123° 4.780' W  
 38° 22.550' N 123° 4.640' W

**Sonoma Coast SMCA**

DANGER  
Explosives

38° 19.570' N 123° 4.710' W  
 38° 19.500' N 123° 4.800' W

**Bodega SMR**

38° 19.380' N 123° 4.470' W  
 38° 19.400' N 123° 4.700' W  
 38° 18.710' N 123° 4.150' W

38° 18.560' N 123° 4.330' W

Bodega Head

THIS CHART DOES NOT REPLACE THE LEGAL DESCRIPTION FOUND IN TITLE 14, CALIFORNIA CODE OF REGULATIONS