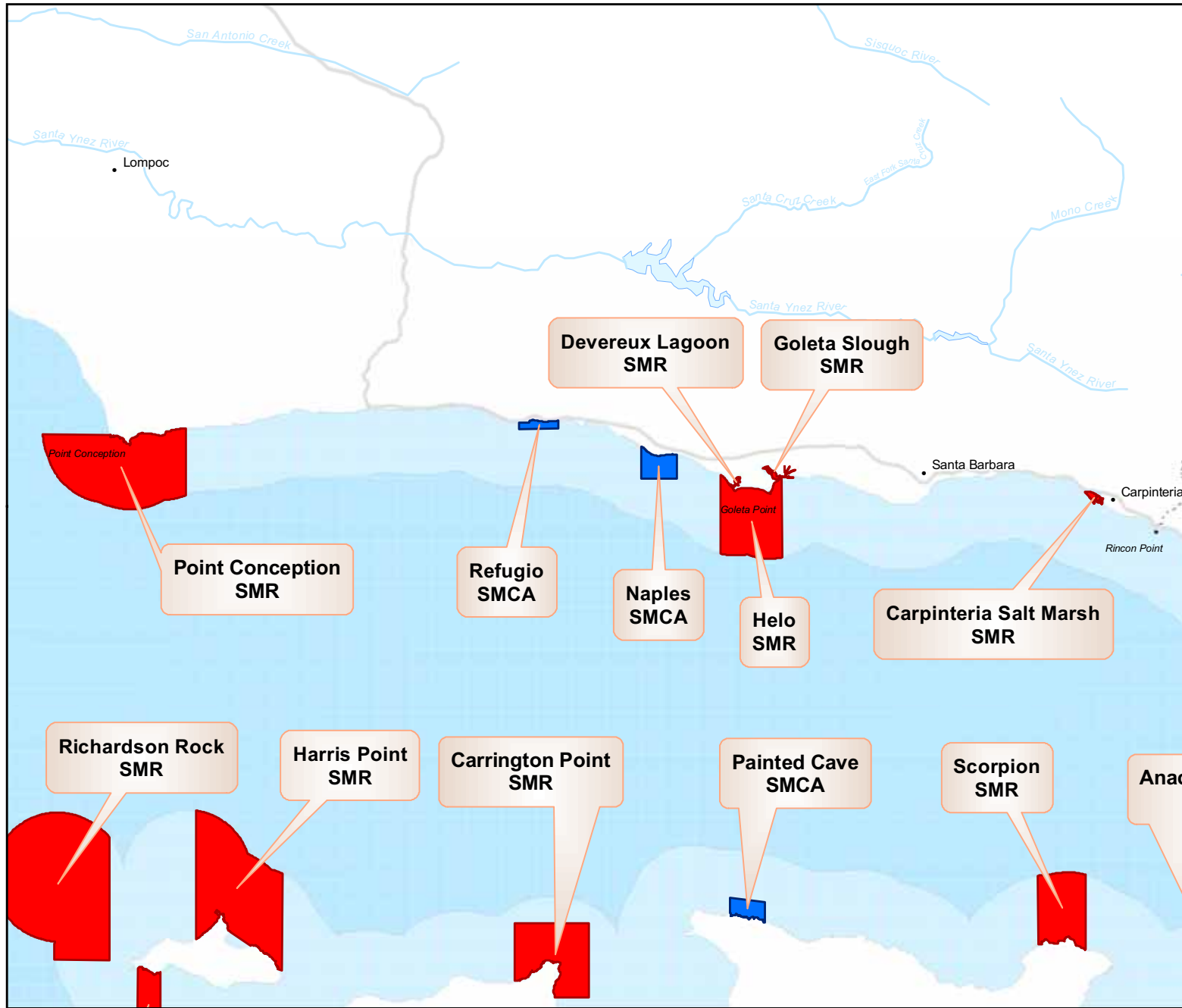




For more detailed maps please visit: www.marinemap.org/marinemap

California Marine Life Protection Act (MLPA) Initiative

Round 2 Topaz Draft MPA Proposal

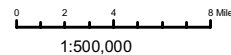


- Legend**
- Pending Military Closure
 - Proposed State Marine Conservation Area (SMCA)
 - Proposed State Marine Park (SMP)
 - Proposed State Marine Reserve (SMR = No Take)
 - Proposed State Marine Recreational Management Area (SMRMA)
 - South Coast Study Region Boundary

This map represents a draft marine protected area (MPA) array generated by a cross-interest work group within the MLPA South Coast Regional Stakeholder Group. This draft MPA array is under review; it is NOT a recommendation to the California Fish and Game Commission..

Projection Information:

Name: NAD 1983 California Teale Albers
Projection: Albers
Datum: North American 1983



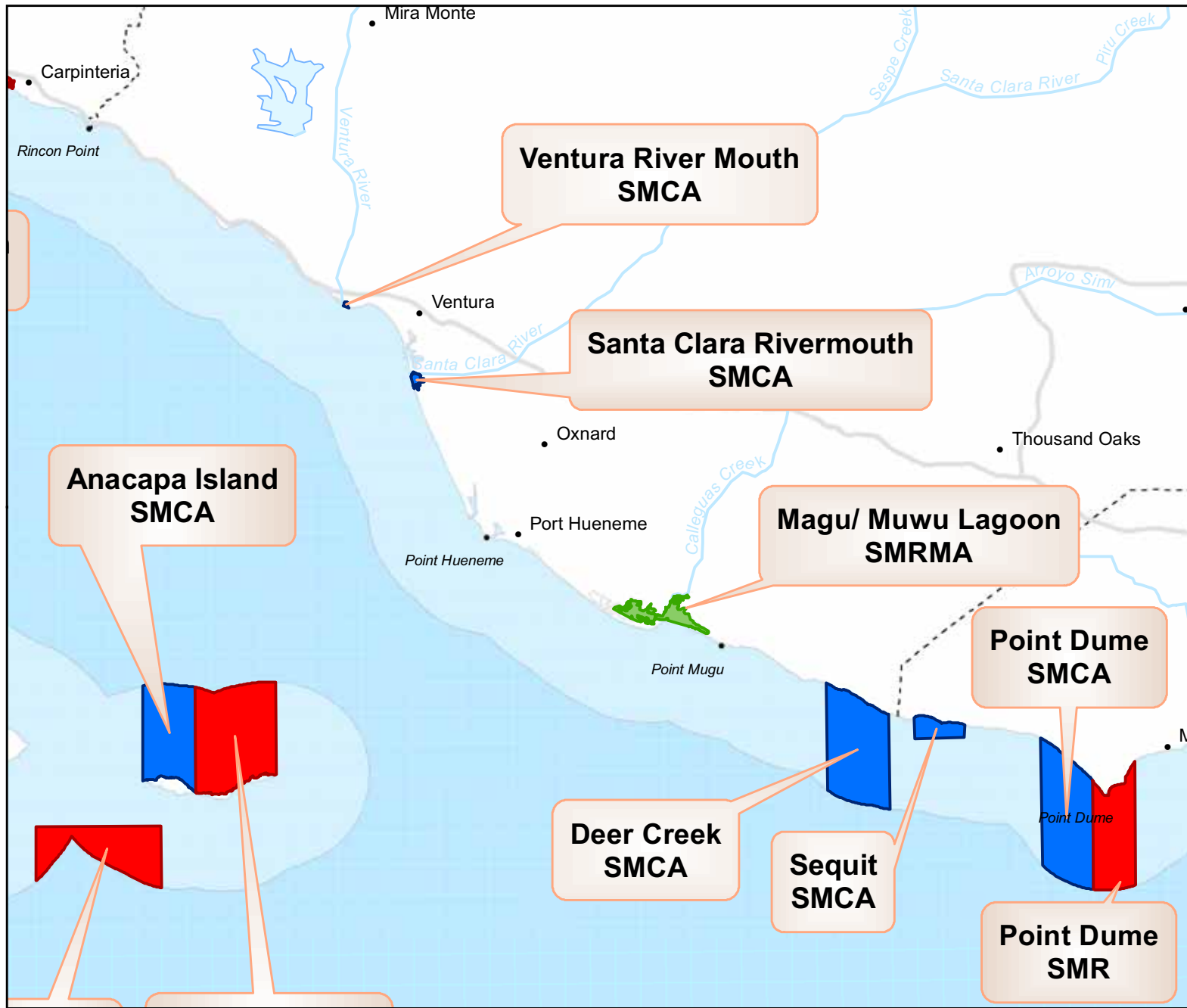
Printing Date: 6/2/2009
Created By:
Marine Map, Cartographic Division UCSB

MLPA South Coast Study Region: Subregion 2 - Rincon Point to Point Dume



For more detailed maps please visit: www.marinemap.org/marinemap

California Marine Life Protection Act (MLPA) Initiative
Round 2
Topaz Draft MPA Proposal

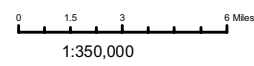


- Legend**
- Pending Military Closure
 - Proposed State Marine Conservation Area (SMCA)
 - Proposed State Marine Park (SMP)
 - Proposed State Marine Reserve (SMR = No Take)
 - Proposed State Marine Recreational Management Area (SMRMA)
 - South Coast Study Region Boundary

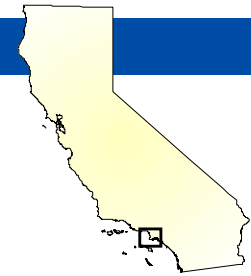
This map represents a draft marine protected area (MPA) array generated by a cross-interest work group within the MLPA South Coast Regional Stakeholder Group. This draft MPA array is under review; it is NOT a recommendation to the California Fish and Game Commission..

Projection Information:

Name: NAD 1983 California Teale Albers
 Projection: Albers
 Datum: North American 1983



Printing Date: 6/2/2009
 Created By:
 Marine Map, Cartographic Division UCSB



For more detailed maps please visit: www.marinemap.org/marinemap

California Marine Life Protection Act (MLPA) Initiative
Round 2
Topaz Draft MPA Proposal

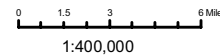


- Legend**
- Pending Military Closure
 - Proposed State Marine Conservation Area (SMCA)
 - Proposed State Marine Park (SMP)
 - Proposed State Marine Reserve (SMR = No Take)
 - Proposed State Marine Recreational Management Area (SMRMA)
 - South Coast Study Region Boundary

This map represents a draft marine protected area (MPA) array generated by a cross-interest work group within the MLPA South Coast Regional Stakeholder Group. This draft MPA array is under review; it is NOT a recommendation to the California Fish and Game Commission..

Projection Information:

Name: NAD 1983 California Teale Albers
 Projection: Albers
 Datum: North American 1983



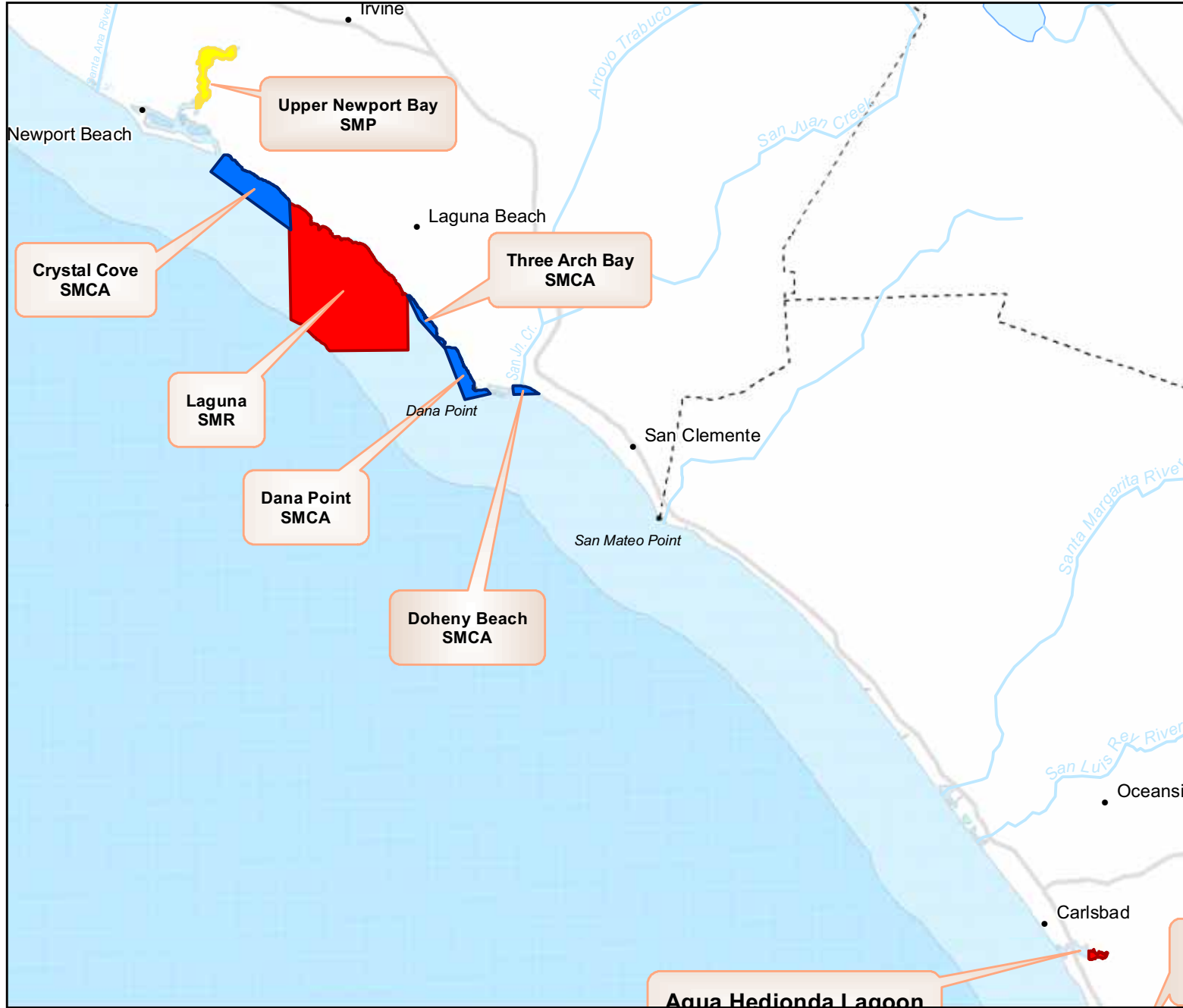
Printing Date: 6/2/2009
 Created By:
 Marine Map, Cartographic Division UCSB



For more detailed maps please visit: www.marinemap.org/marinemap

California Marine Life Protection Act (MLPA) Initiative

Round 2 Topaz Draft MPA Proposal

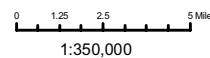


- Legend**
- Pending Military Closure
 - Proposed State Marine Conservation Area (SMCA)
 - Proposed State Marine Park (SMP)
 - Proposed State Marine Reserve (SMR = No Take)
 - Proposed State Marine Recreational Management Area (SMRMA)
 - South Coast Study Region Boundary

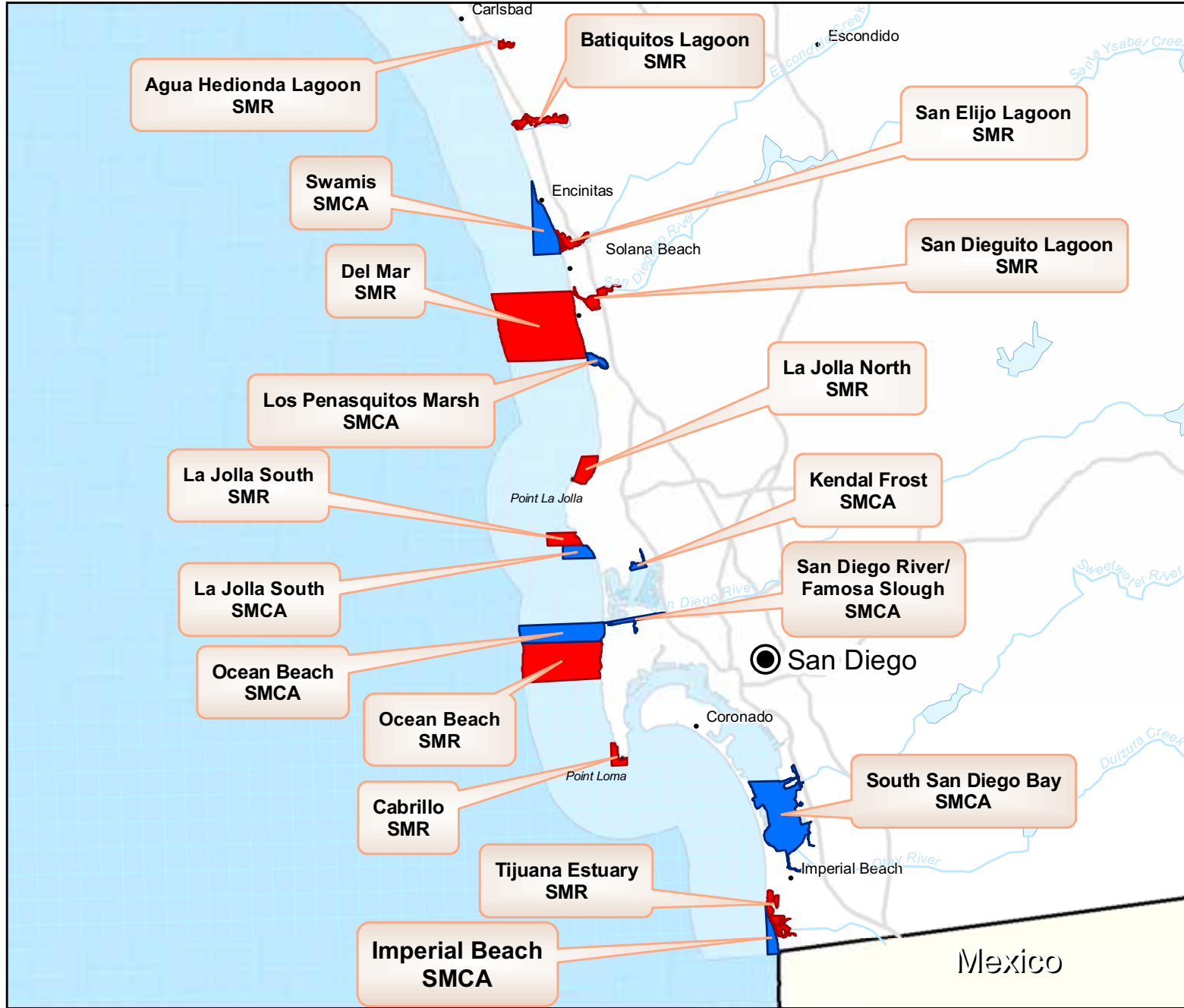
This map represents a draft marine protected area (MPA) array generated by a cross-interest work group within the MLPA South Coast Regional Stakeholder Group. This draft MPA array is under review; it is NOT a recommendation to the California Fish and Game Commission..

Projection Information:

Name: NAD 1983 California Teale Albers
Projection: Albers
Datum: North American 1983



Printing Date: 6/2/2009
Created By:
Marine Map, Cartographic Division UCSB



For more detailed maps please visit: www.marinemap.org/marinemap

California Marine Life Protection Act (MLPA) Initiative

Round 2 Topaz Draft MPA Proposal

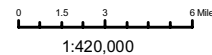
Legend

- Pending Military Closure
- Proposed State Marine Conservation Area (SMCA)
- Proposed State Marine Park (SMP)
- Proposed State Marine Reserve (SMR = No Take)
- Proposed State Marine Recreational Management Area (SMRMA)
- South Coast Study Region Boundary

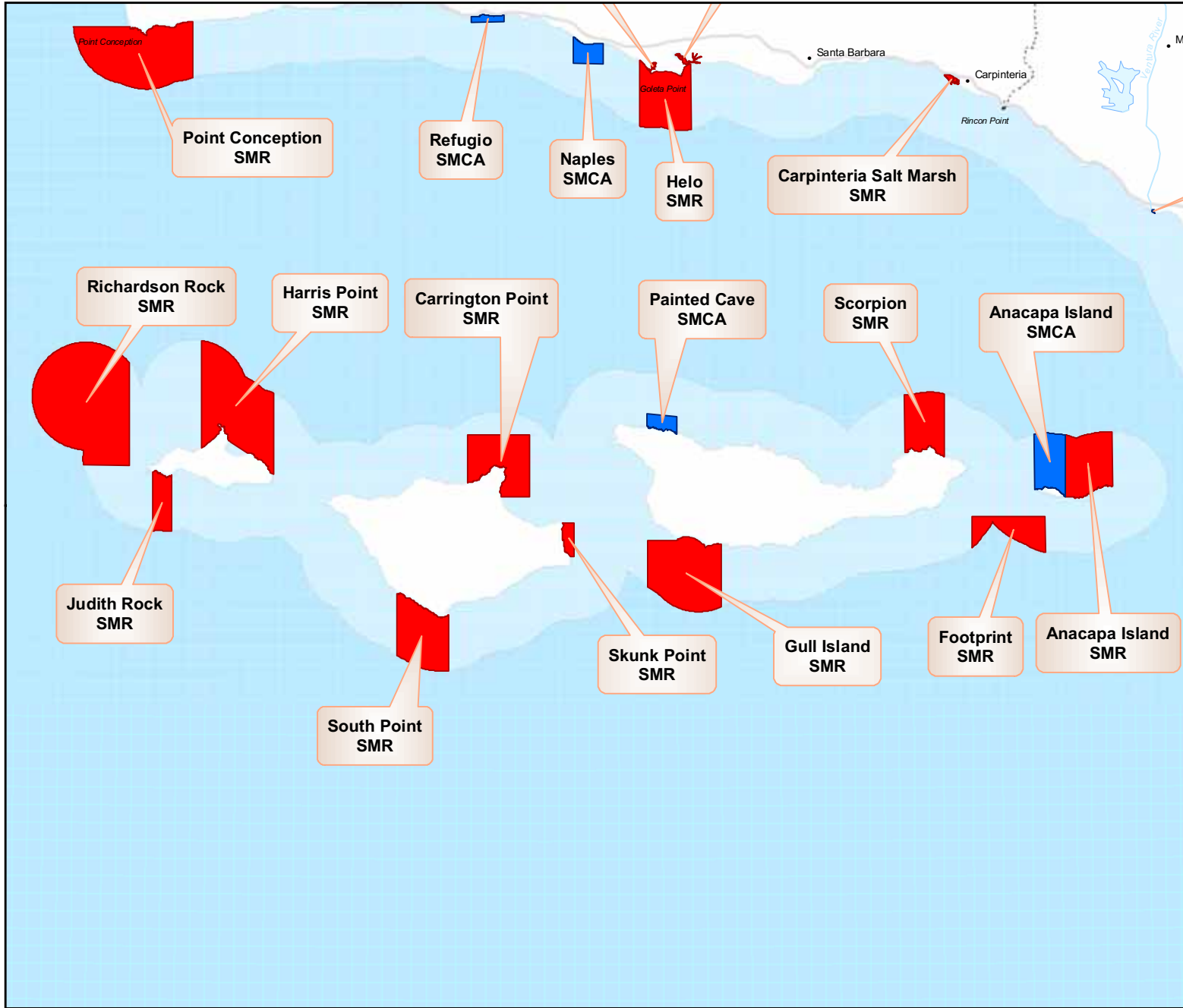
This map represents a draft marine protected area (MPA) array generated by a cross-interest work group within the MLPA South Coast Regional Stakeholder Group. This draft MPA array is under review; it is NOT a recommendation to the California Fish and Game Commission..

Projection Information:

Name: NAD 1983 California Teale Albers
Projection: Albers
Datum: North American 1983



Printing Date: 6/2/2009
Created By:
Marine Map, Cartographic Division UCSB



For more detailed maps please visit: www.marinemap.org/marinemap

California Marine Life Protection Act (MLPA) Initiative

Round 2 Topaz Draft MPA Proposal

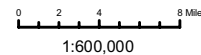
Legend

- Pending Military Closure
- Proposed State Marine Conservation Area (SMCA)
- Proposed State Marine Park (SMP)
- Proposed State Marine Reserve (SMR = No Take)
- Proposed State Marine Recreational Management Area (SMRMA)
- South Coast Study Region Boundary

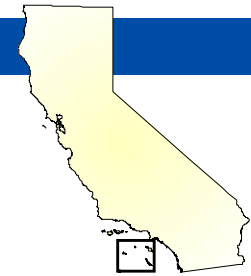
This map represents a draft marine protected area (MPA) array generated by a cross-interest work group within the MLPA South Coast Regional Stakeholder Group. This draft MPA array is under review; it is NOT a recommendation to the California Fish and Game Commission..

Projection Information:

Name: NAD 1983 California Teale Albers
Projection: Albers
Datum: North American 1983

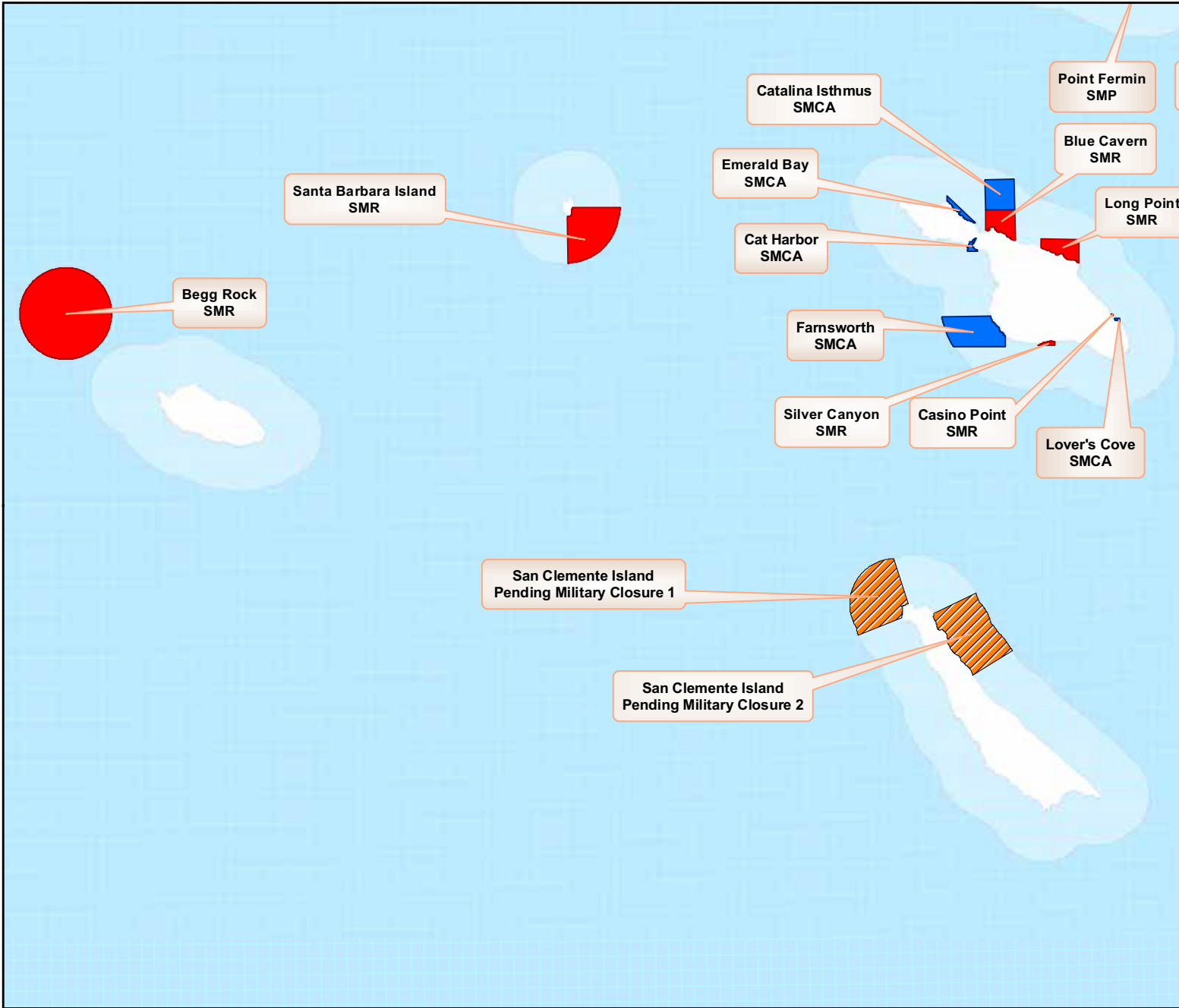


Printing Date: 6/2/2009
Created By:
Marine Map, Cartographic Division UCSB



For more detailed maps please visit: www.marinemap.org/marinemap

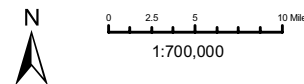
California Marine Life Protection Act (MLPA) Initiative
Round 2
Topaz Draft MPA Proposal



- Legend**
- Pending Military Closure
 - Proposed State Marine Conservation Area (SMCA)
 - Proposed State Marine Park (SMP)
 - Proposed State Marine Reserve (SMR = No Take)
 - Proposed State Marine Recreational Management Area (SMRMA)
 - South Coast Study Region Boundary

This map represents a draft marine protected area (MPA) array generated by a cross-interest work group within the MLPA South Coast Regional Stakeholder Group. This draft MPA array is under review; it is NOT a recommendation to the California Fish and Game Commission..

Projection Information:
 Name: NAD 1983 California Teale Albers
 Projection: Albers
 Datum: North American 1983



Printing Date: 6/2/2009
 Created By:
 Marine Map, Cartographic Division UCSB