

## Marine Life Protection Act Initiative



### Concluding the MLPA South Coast Regional Stakeholder Group Process

Presentation to the MLPA Blue Ribbon Task Force  
October 20, 2009 • Long Beach, California

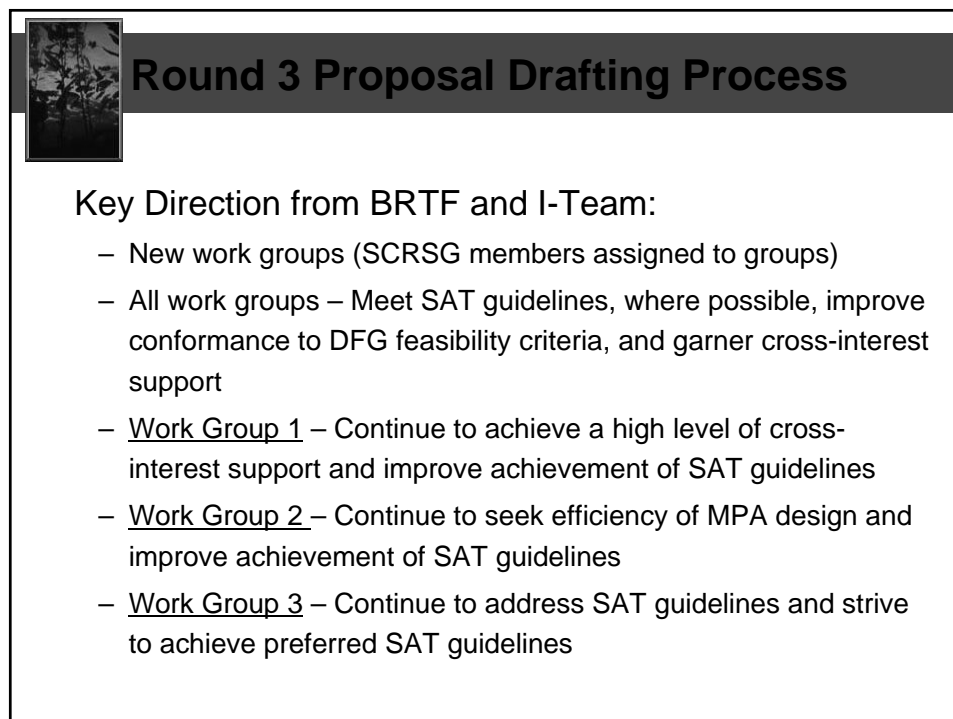
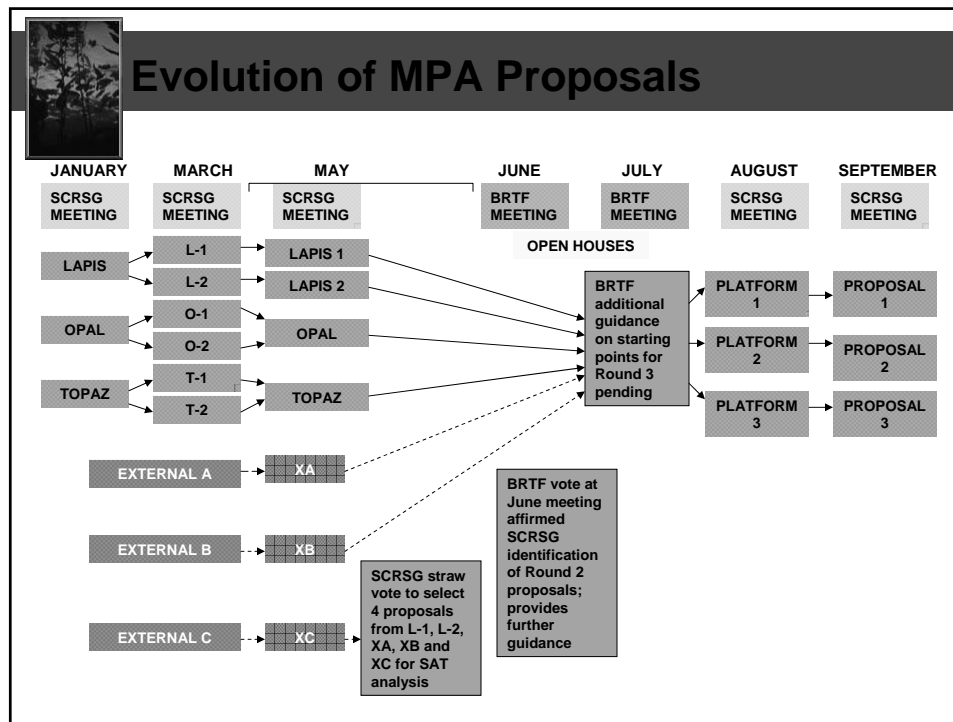
Melisa Miller-Henson, California MLPA Initiative




### SCRSG Accomplishments

The South Coast Regional Stakeholder Group (SCRSG) has accomplished all elements of its charge:


- Contributed to developing the regional profile
- Adopted south coast regional goals and objectives
- Developed and revised marine protected area (MPA) proposals
- Closely considered science team, task force, fish and game, and state parks advice at each step
- Consistent with task force guidance, SCRSG arrived at three complete MPA proposals
  - Tremendous work ethic, personal commitment, and good humor





## Round 3 Work Group Affiliation

Work Group 1	Work Group 2	Work Group 3
Starting Platform: Topaz	Starting Platform: External A	Starting Platform: Lapis 1
Abramson (Sikich), Sara Beede, Ben Bursek, Julie Cordero, Roberta Czarnecki, Lauren Daigle, Leslie Engel, Jonna Feinberg, Jenn Ferrigno, Ciro Fields, Ray Galipeau, Russ Grifman, Phyllis Hiemstra, Ray Huber, Mike Kearsley, Ken Kennedy, MJ Kett, Eric Peveler, Jack Protopapadakis, Lia Richter, Gerry Rudie, Dave Sasidaharan, Vinod Scheiwe, Brent Sepulveda, Chugey Steele, Bruce	Balotti, John Bertelli, Bob Dahl, Jim Beghul, Phil Everingham, Buck Fisher, Josh Fletcher, Robert Foley, MJ Gauger, Mike Gomes, Tommy Greenberg, Joel Griffin, Wayne Ketchum, Kevin Kronman, Mick Lebowitz, Paul Maas, Terry Maasen, Jeff Marshall, Jenny McCorkle, Mike McCrea, Merit Mills, Marc Osborn, Bob Tapp, Norris Tochiara, Wendy	Allison, Calla Benavides, Steve Dunn, Scott Engle, Jack Guassac, Louis Gutterez, Marcela Hanley, Kate Helms, Greg Mayhugh, Carl McCoy, Mike Murphy, Garth Pister, Benjamin Spacie, Anne Teufel, Cassidy Weeshoff, David

- 
- ## Round 3 Proposal Drafting Process
- Other Characteristics of Round 3 Proposals:
- Continued consideration of socioeconomic impacts
  - Careful attention to preparing clear “rationales” detailing the main purpose of the MPA, and clearly identifying allowed uses
  - Extensive work group deliberations; many iterations of proposal-making, deliberation, weighing choices
  - Learning from other work group proposals
  - Extensive SCRSG communication with local stakeholders and broader constituencies
  - SCRSG members listened carefully to public comments (from open houses, comments presented at meetings, written comments)



## SCRSG Charge Completed

- MLPA Initiative staff greatly appreciates the outstanding efforts of SCRSG members
- SCRSG members here to help brief the MLPA Blue Ribbon Task Force by providing information regarding:
  - specific geographies
  - context and rationale for designs
  - choices made to address various interests
  - local expertise and knowledge about human uses