

Marine Life Protection Act Initiative

Summary of Potential Impacts of the Round 3 SCRSG MPA Proposals on Commercial and Recreational Fisheries

Presentation to the MLPA Blue Ribbon Task Force
October 20, 2009 • Long Beach, CA

Dr. Sarah Kruse, Ecotrust

1

Overview

- Data and analysis

	Commercial	Commercial Passenger Fishing Vehicle (CPFV)	Recreational
# of fisheries	15 species	10 species	17 species
Level of analysis	65 port-fishery combinations	80 port-fishery combinations	Results reported by user group (private boat, kayak, dive/spear) and by county

- Reported results

	Commercial	CPFV	Recreational
Potential impacts on fishing grounds (area and value)	X	X	X
Potential net economic impacts	X	X	
Potential gross economic impacts	X		
Disproportionate impacts	X	X	

- Convergence between the proposals

2



1. Impacts on Fishing Grounds (Value)

- Number of port-fishery combinations in each proposal with the least potential impact on total value of commercial fisheries considering 65 port-fishery combinations

	P1	P2	P3
Least potential impact	14	47	14
Greatest potential impact	10	13	50

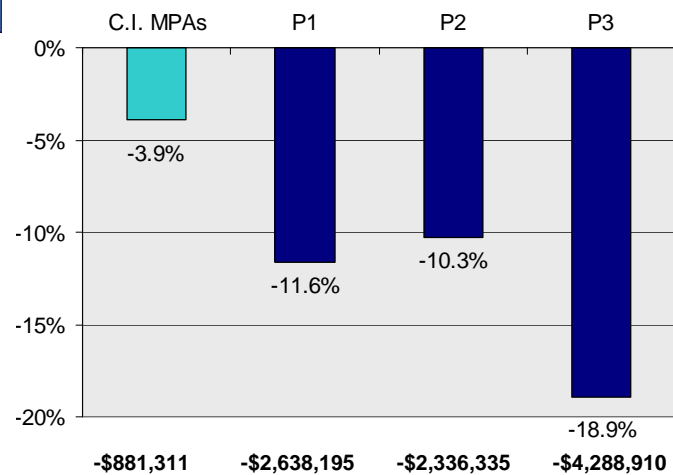
Example: P1 has the least potential impact on 14 port-fishery combinations and the greatest potential impact on 10 port-fishery combinations.

- Number of port-fishery combinations in each proposal with the least potential impact on total value of CPFV fisheries considering 80 port-fishery combinations

	P1	P2	P3
Least potential impact	21	40	30
Greatest potential impact	50	7	25

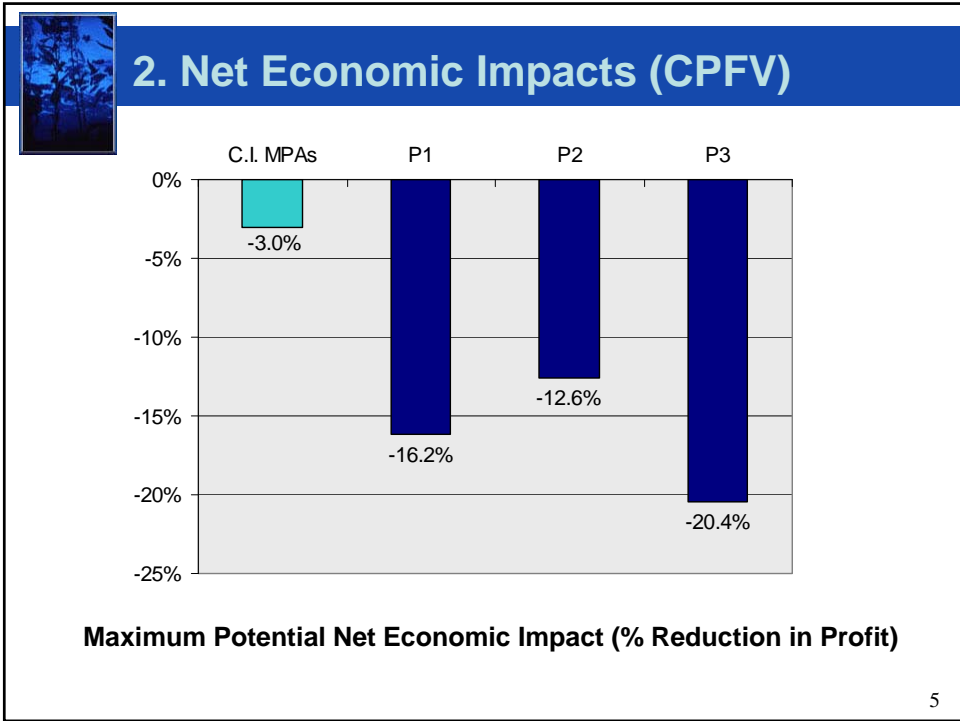


2. Net Economic Impacts (Commercial)



Maximum Potential Net Economic Impact (% Reduction in Profit)

Note: For potential gross economic impacts, please see pages 14-24 in the summary evaluation report.



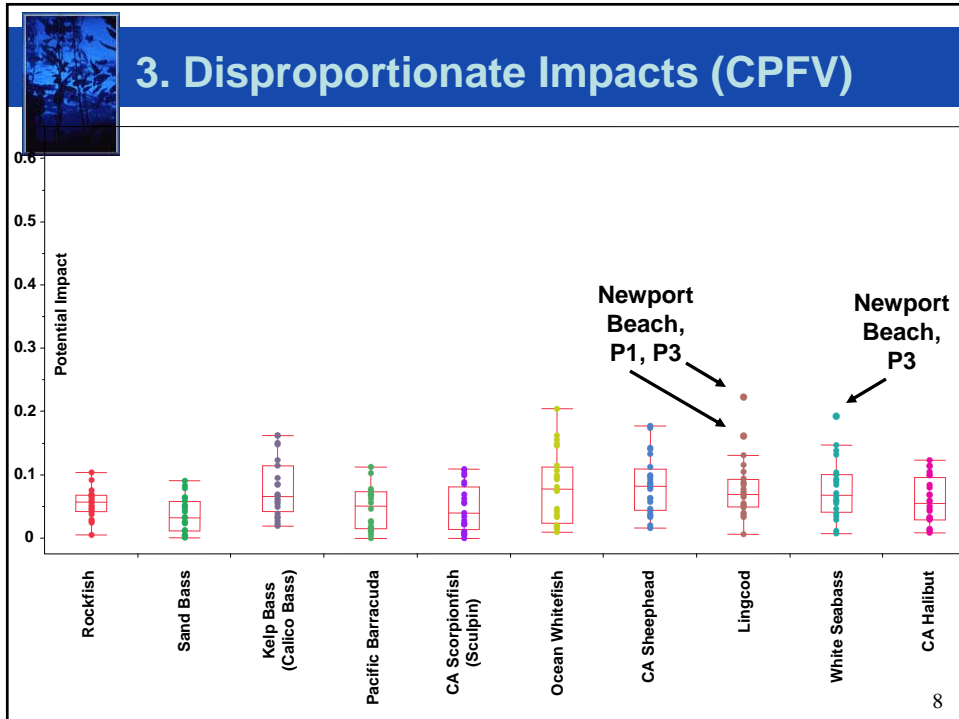
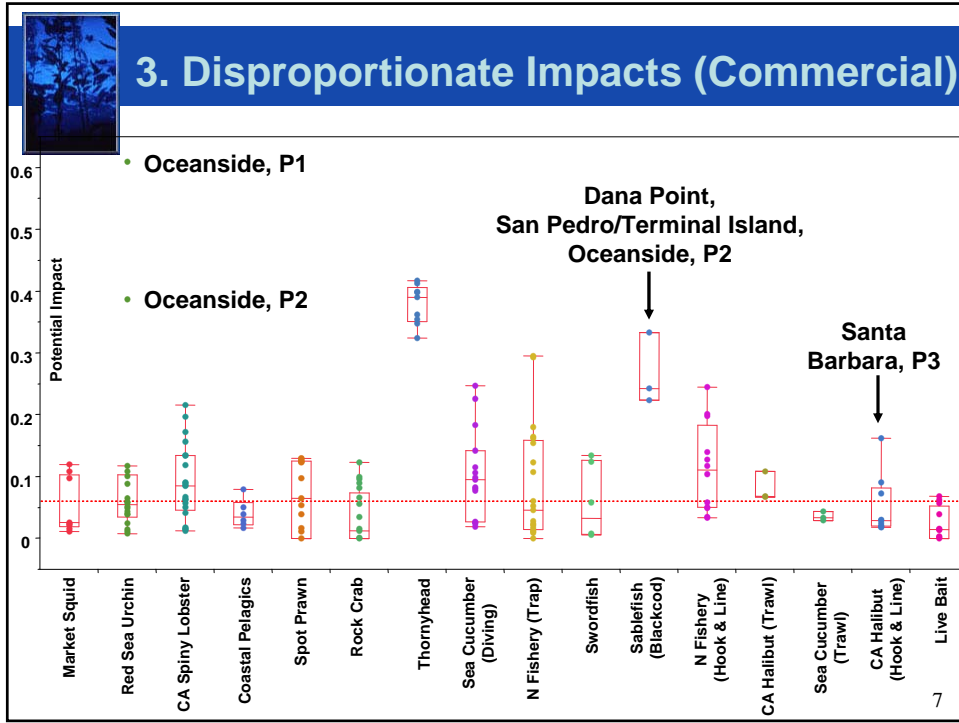
3. Disproportionate Impacts – Summary

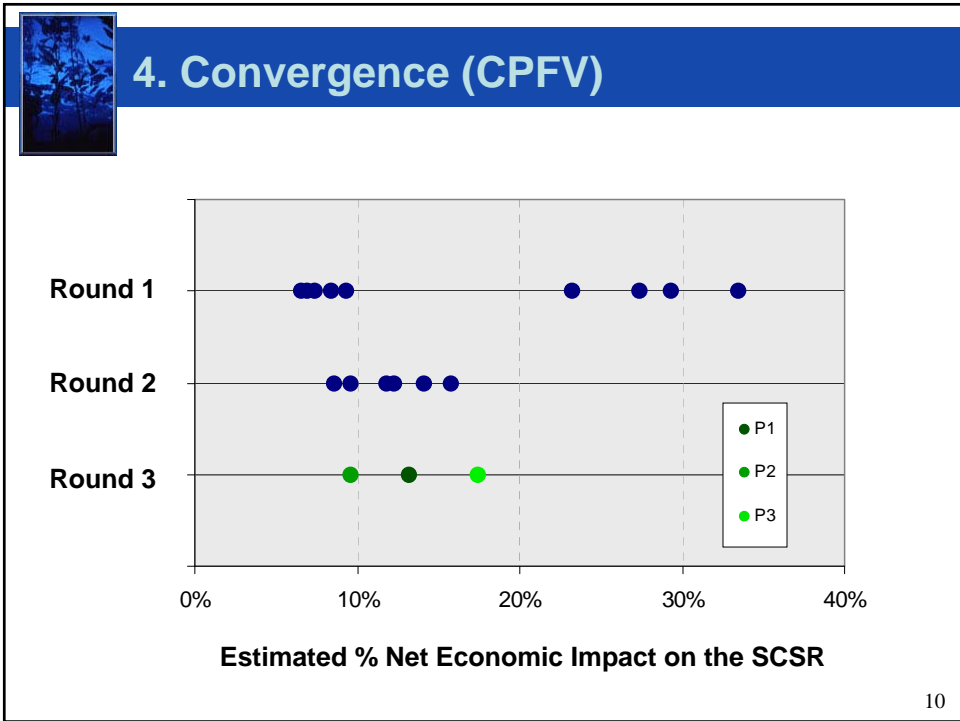
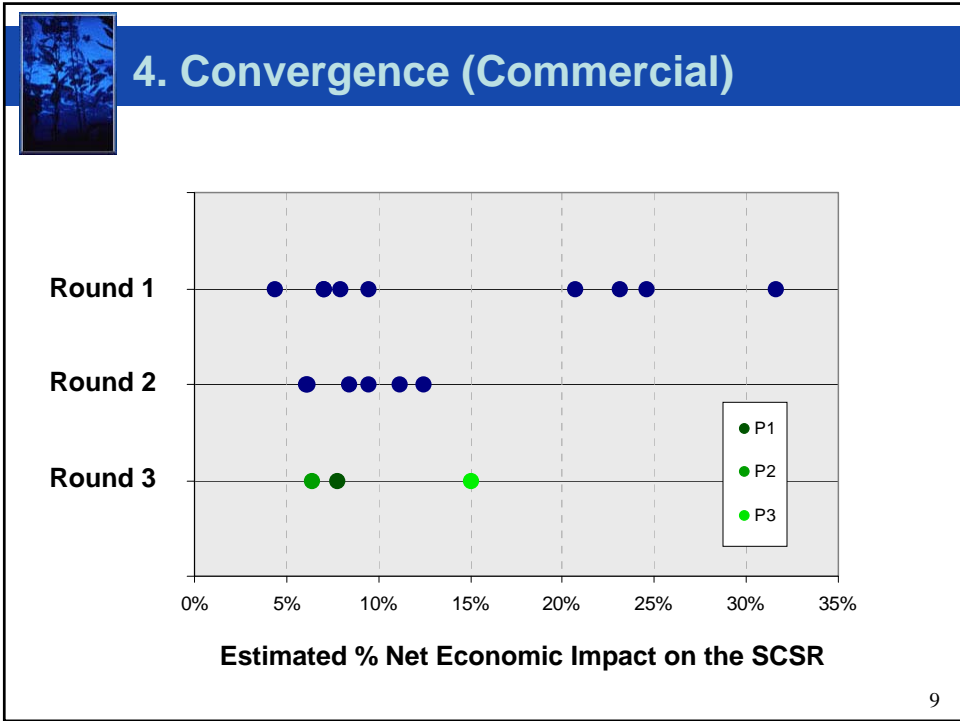
- Disproportionately impacted commercial port-fishery combinations (minus C.I. impacts)

Port	Fishery	Proposal(s)
Santa Barbara	Ca. Halibut (Hook and Line)	P3
San Pedro/Terminal Island	Sablefish (blackcod)	P2
Dana Point	Sablefish (blackcod)	P2
Oceanside	Sablefish (blackcod)	P2
Oceanside	Red Sea Urchin	P1, P2
- Disproportionately impacted CPFV port-fishery combinations (minus C.I. impacts)

Port	Fishery	Proposal(s)
Newport Beach	White Seabass	P3
Newport Beach	Lingcod	P1, P3

6





Net Economic Impacts (Commercial)

- Lowest impact in each row (reported at the study region level) is in blue

Fishery	Baseline	Estimated	Baseline	C.I. MPAs			
	GER	Costs	NER (Profit)	% Reduction in Profit			
					P1	P2	P3
				% Reduction in Profit			
Ca. Halibut (flatty) (Hook & Line)	100%	52%	48%	9.3%	19.9%	17.9%	27.6%
Ca. Halibut (flatty) (Trawl)	—	—	—	—	—	—	—
Coastal Pelagics	100%	56%	44%	0.8%	6.3%	4.1%	11.7%
Ca. Spiny Lobster	100%	46%	54%	1.6%	16.6%	12.9%	21.2%
N. Fishery (Hook & Line)	100%	52%	48%	11.1%	23.1%	23.0%	27.1%
N. Fishery (Trap)	100%	51%	49%	0.7%	15.8%	8.9%	21.4%
Rock Crabs	100%	47%	53%	4.0%	11.7%	10.3%	12.7%
Sablefish (blackcod)	100%	56%	44%	0.0%	44.9%	61.8%	41.5%
Sea Cucumbers (Diving)	100%	50%	50%	13.0%	22.3%	21.3%	30.3%
Sea Cucumbers (Trawl)	—	—	—	—	—	—	—
Spot Prawn	100%	49%	51%	9.9%	18.7%	17.1%	19.3%
Market Squid	100%	57%	43%	3.7%	7.3%	6.7%	19.5%
Swordfish	100%	66%	34%	2.1%	17.9%	9.7%	19.1%
Thornyhead	100%	52%	48%	0.0%	62.7%	67.0%	55.9%
Red Sea Urchin	100%	45%	55%	6.6%	13.2%	12.0%	16.9%
All Fisheries	—	—	—	3.9%	11.6%	10.3%	18.9%

*Note: The Coastal Pelagics fishery includes both Northern Anchovy and Pacific Sardine.
The N. Fishery includes Cabezon, Greenlings, and some Rockfishes.*

11

Gross Economic Impacts (Commercial)

- Lowest impact in each row (reported at the study region level) is in blue

Fishery	Baseline	C.I. MPAs		
	GER	% Reduction in Profit		
		P1	P2	P3
		% Reduction in Profit		
Ca. Halibut (flatty) (Hook & Line)	100%	5.9%	12.7%	17.5%
Ca. Halibut (flatty) (Trawl)	—	—	—	—
Coastal Pelagics	100%	0.6%	4.4%	8.1%
Ca. Spiny Lobster	100%	1.1%	11.0%	14.0%
N. Fishery (Hook & Line)	100%	7.0%	14.5%	17.0%
N. Fishery (Trap)	100%	0.5%	10.2%	13.9%
Rock Crabs	100%	2.6%	7.6%	8.2%
Sablefish (blackcod)	100%	0.0%	24.3%	22.4%
Sea Cucumbers (Diving)	100%	8.4%	14.3%	19.4%
Sea Cucumbers (Trawl)	—	—	—	—
Spot Prawn	100%	6.4%	12.2%	12.6%
Squid	100%	2.6%	5.0%	13.3%
Swordfish	100%	0.9%	7.9%	8.5%
Thornyhead	100%	0.0%	38.1%	34.0%
Red Sea Urchin	100%	4.4%	8.7%	11.2%
All Fisheries	—	2.5%	7.4%	12.7%

*Note: The Coastal Pelagics fishery includes both Northern Anchovy and Pacific Sardine.
The N. Fishery includes Cabezon, Greenlings, and some Rockfishes.*

12