

Briefing Document F.2: Overview Maps of Proposal 0 (Existing MPAs) and Round 3 SCRSG MPA

Legend

ExistingMpas

Existing State Marine Protected Areas Type

- Existing State Marine Conservation Area (SMCA)
- Existing State Marine Park (SMP)
- Existing State Marine Reserve (SMR = No Take)
- South Coast Study Region Boundary

For more detailed maps please visit: www.marinemap.org/marinemap

Projection Information:

Name: NAD 1983 California Teale Albers
 Projection: Albers
 Datum: North American 1983

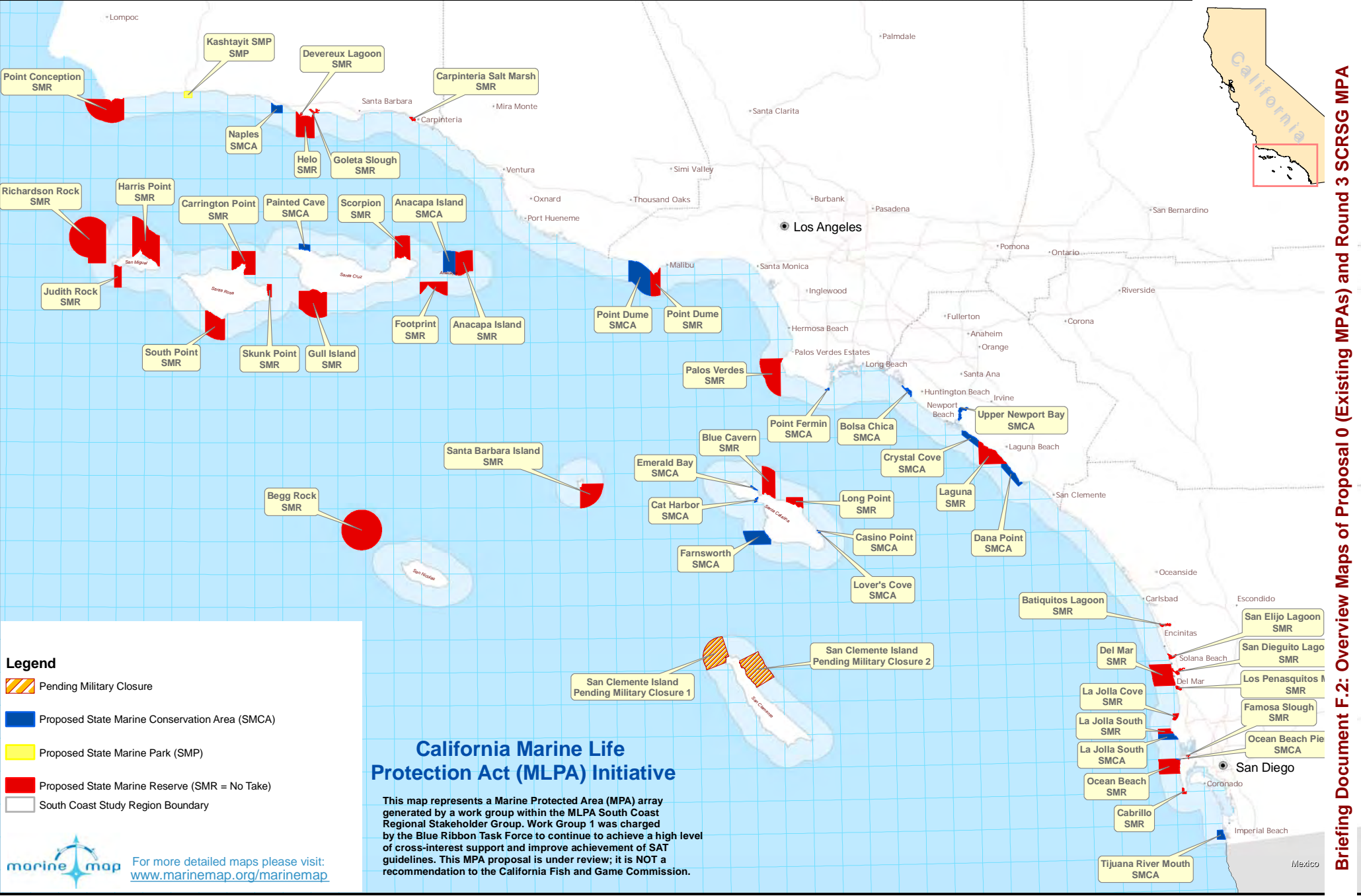
N

0 3.75 7.5 15 Miles

1:1,400,000

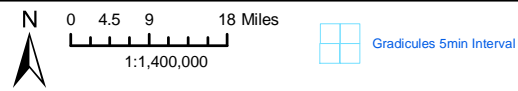
Printing Date: 2/25/2009

Created By:
 Marine Map, Cartographic Division UCSB

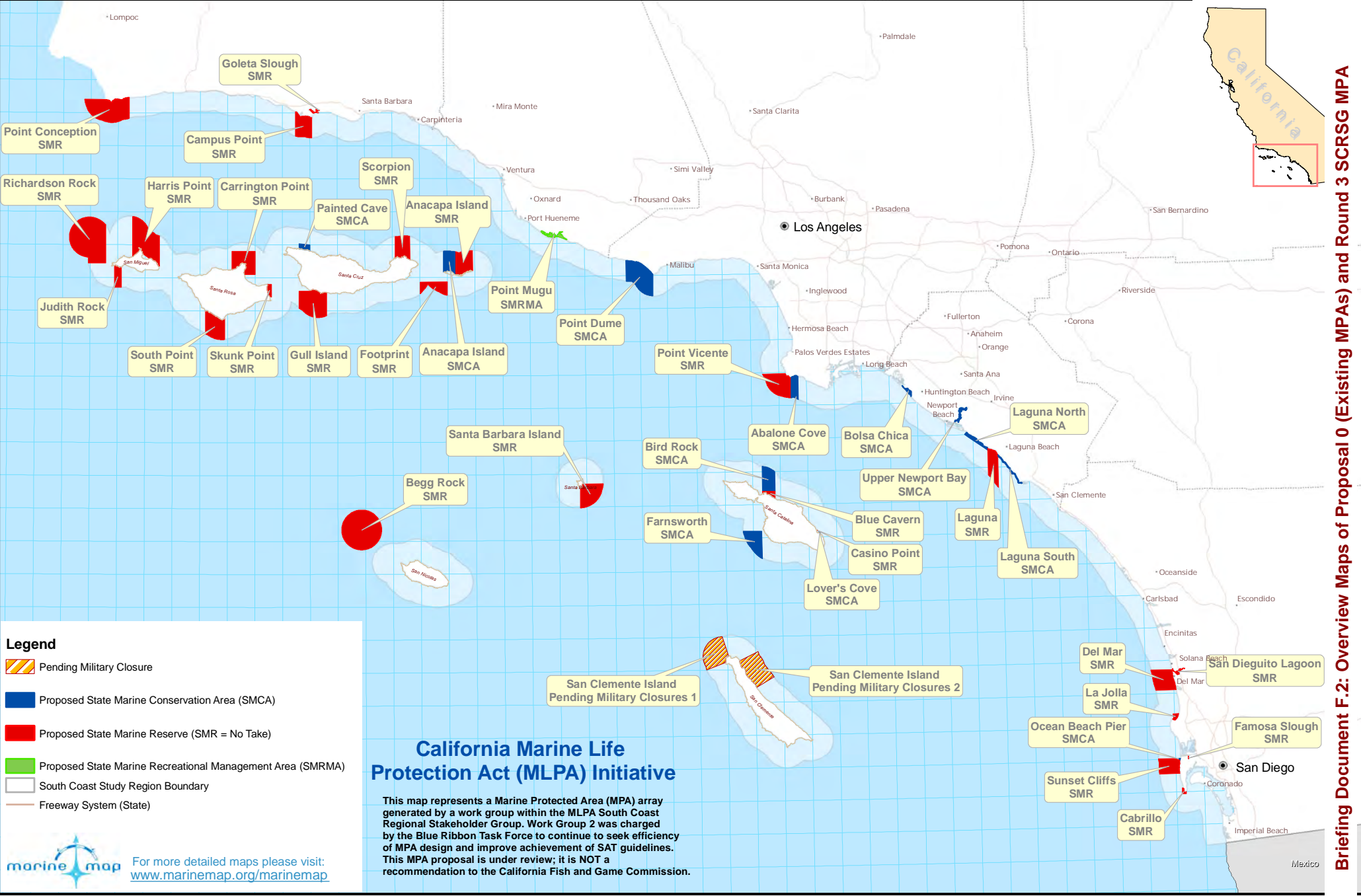


Briefing Document F.2: Overview Maps of Proposal 0 (Existing MPAs) and Round 3 SCRSG MPA

Projection Information:
 Name: NAD 1983 California Teale Albers
 Projection: Albers
 Datum: North American 1983



Printing Date: 09/21/2009
 Created By:
 Marine Map, Cartographic Division UCSB



Legend

- Pending Military Closure
- Proposed State Marine Conservation Area (SMCA)
- Proposed State Marine Reserve (SMR = No Take)
- Proposed State Marine Recreational Management Area (SMRMA)
- South Coast Study Region Boundary
- Freeway System (State)

marine map For more detailed maps please visit: www.marinemap.org/marinemap

California Marine Life Protection Act (MLPA) Initiative

This map represents a Marine Protected Area (MPA) array generated by a work group within the MLPA South Coast Regional Stakeholder Group. Work Group 2 was charged by the Blue Ribbon Task Force to continue to seek efficiency of MPA design and improve achievement of SAT guidelines. This MPA proposal is under review; it is NOT a recommendation to the California Fish and Game Commission.

Projection Information:
 Name: NAD 1983 California Teale Albers
 Projection: Albers
 Datum: North American 1983

N

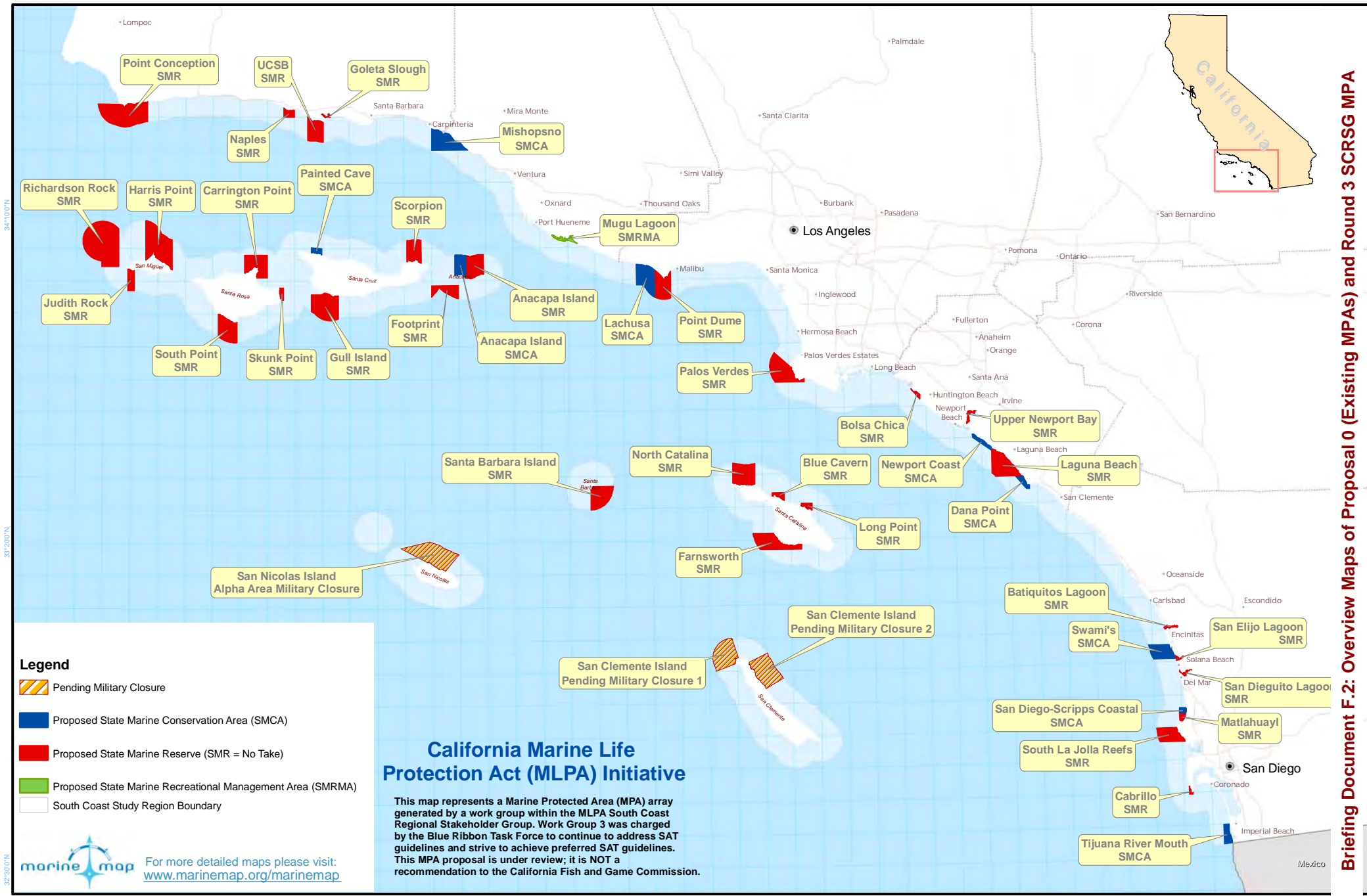
0 4 8 16 Miles

1:1,400,000

Gradicules 5min Intervals

Printing Date: 09/21/2009

Created By:
 Marine Map, Cartographic Division UCSB



Legend

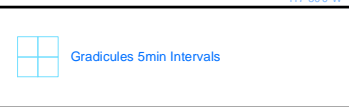
- Pending Military Closure
- Proposed State Marine Conservation Area (SMCA)
- Proposed State Marine Reserve (SMR = No Take)
- Proposed State Marine Recreational Management Area (SMRMA)
- South Coast Study Region Boundary

California Marine Life Protection Act (MLPA) Initiative

This map represents a Marine Protected Area (MPA) array generated by a work group within the MLPA South Coast Regional Stakeholder Group. Work Group 3 was charged by the Blue Ribbon Task Force to continue to address SAT guidelines and strive to achieve preferred SAT guidelines. This MPA proposal is under review; it is NOT a recommendation to the California Fish and Game Commission.

For more detailed maps please visit: www.marinemap.org/marinemap

Projection Information:
 Name: NAD 1983 California Teale Albers
 Projection: Albers
 Datum: North American 1983



Printing Date: 09/18/2009
 Created By:
 Marine Map, Cartographic Division UCSB