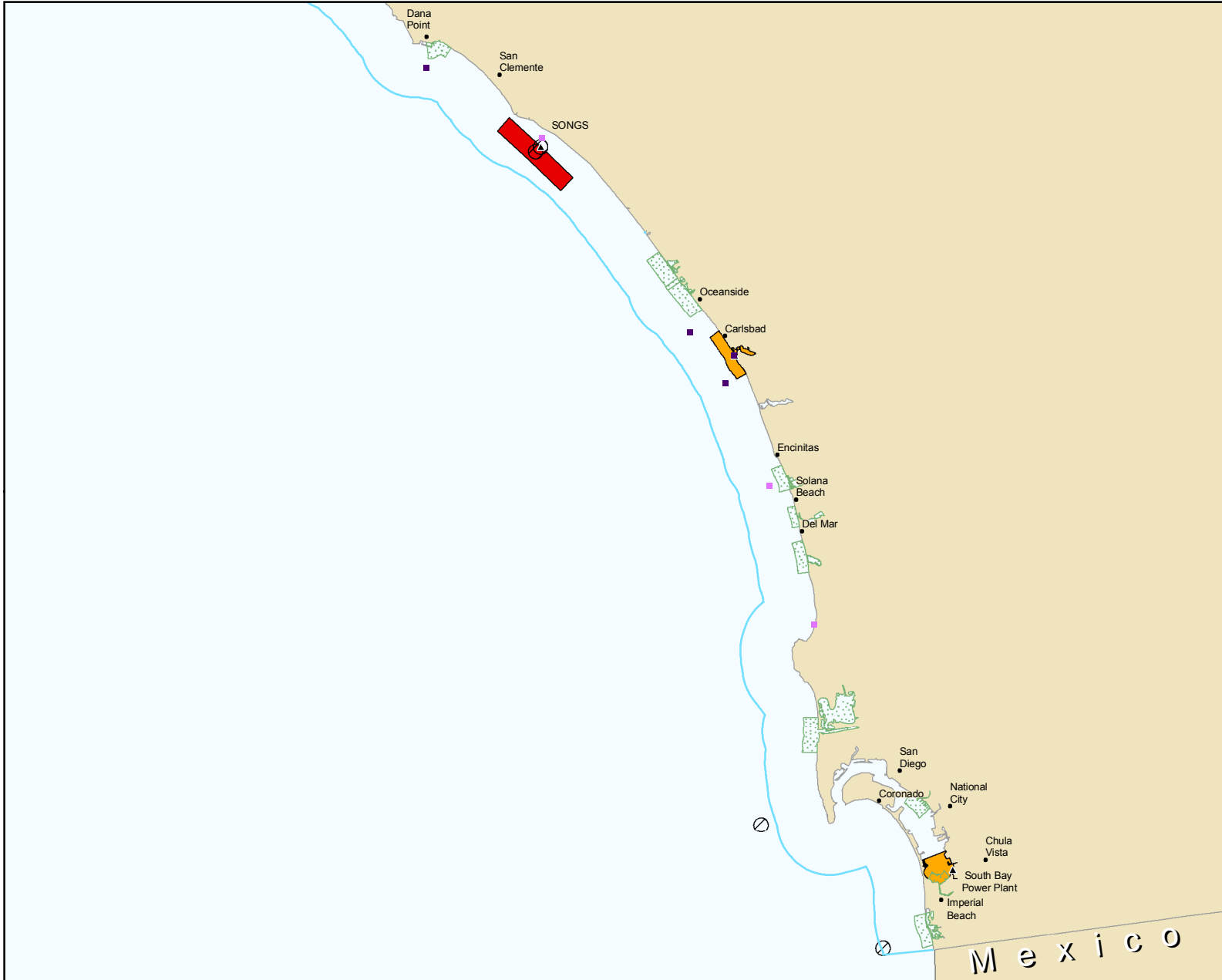




For more detailed maps please visit:  
[www.marinemap.org/marinemap](http://www.marinemap.org/marinemap)



**South Coast Study Region Boundary**



**Power Plant Entrainment\***

**Millions of Larvae per Year Entrained**

- 30 - 99.9
- 100 - 999.9
- 1,000 - 3,199.9
- 3,200 - 6,231

▲ Power Plant Intake

**Discharge**

- Major Stormwater Discharge\*
- Major Wastewater Discharge\*
- Intermediate Wastewater Discharge
- Minor Wastewater Discharge

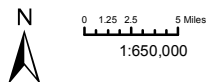
\*The area covered by the symbology used to represent stormwater discharge, major wastewater discharge and power plant entrainment represents the area affected. The extent of all other symbology on this map is not to scale. The area covered by this symbology represents the general location of these features.



Marine Life Protection Act Initiative

**Projection Information:**

Name: NAD 1983 California Teale Albers  
 Projection: Albers  
 Datum: North American 1983



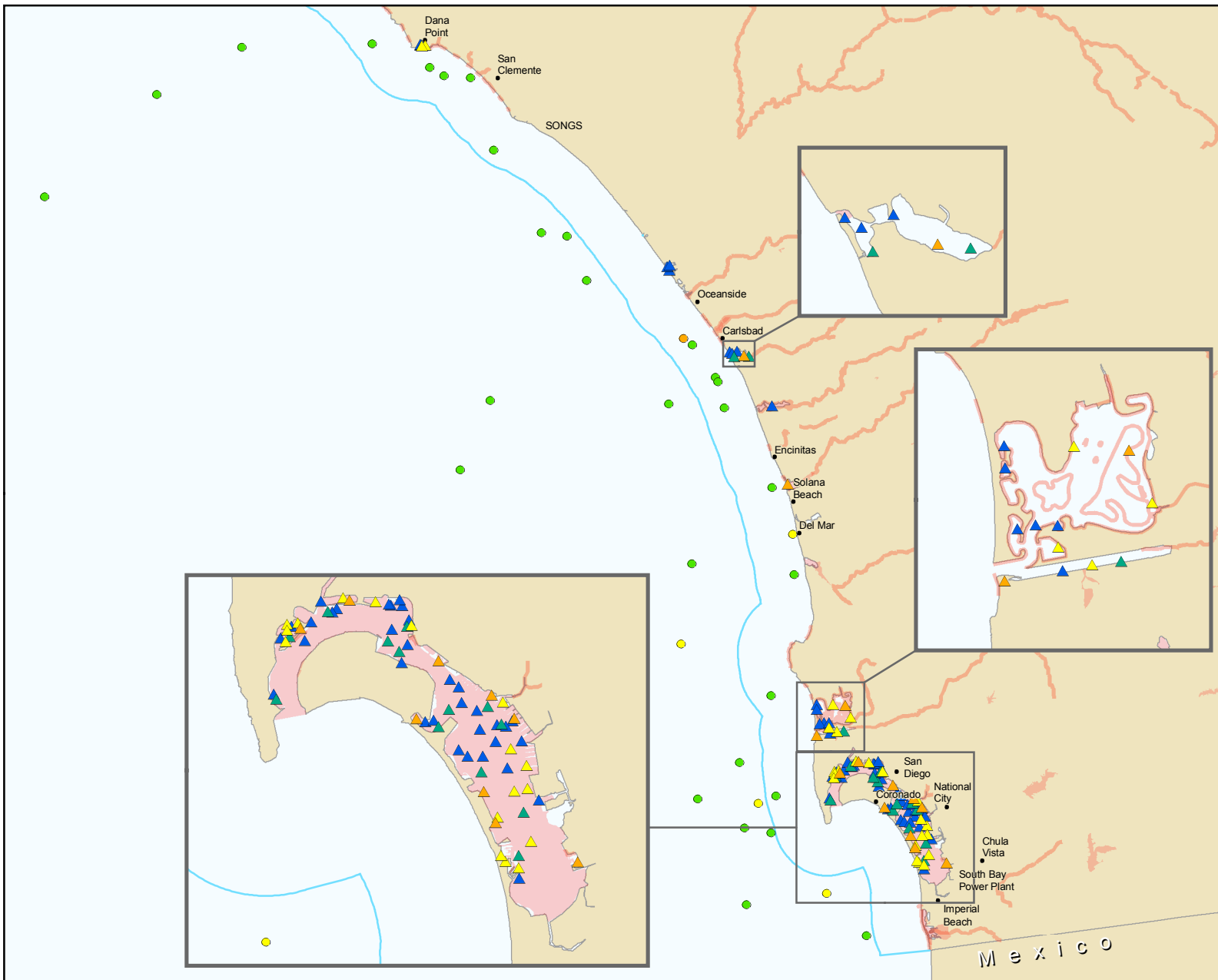
Citations for all data layers are the followings: Ackerman and Schiff (2003); Bay et al. (2003); Barnett et al. (2007); Ranasinghe et al. (2007); Foster and Steinbeck (2008); USEPA (2008). The full citations can be found within the water quality guidance document labeled "California MLPA Master Plan Science Advisory Team Recommendations for Considering Water Quality and Marine Protected Areas in the South Coast Study Region".

**Version: 1.7**  
**Printing Date: Feb 13, 2009**

**Map 3a**



For more detailed maps please visit:  
[www.marinemap.org/marinemap](http://www.marinemap.org/marinemap)



### South Coast Study Region Boundary

### Impaired Water Bodies\*

### Sediment Contamination

- ▲ Unimpacted
- ▲ Likely unimpacted
- ▲ Possibly impacted
- ▲ Likely impacted
- ▲ Clearly impacted

### Benthic Condition

- Reference
- Response Level 1
- Response Level 2
- Response Level 3

Benthic Response Level	Benthic Condition	Benthic Condition Description
Reference	Good	Reference
Level 1	Good	Marginal deviation
Level 2	Poor	Biodiversity loss
Level 3	Poor	Community function loss or defaunation

\*Contains all 303d listed pollutants except recreational contact impairments such as bacteria and/or other pathogens. Impairments caused by bacteria and other pathogens do exist but have been removed from these maps.



Marine Life Protection Act Initiative

#### Projection Information:

Name: NAD 1983 California Teale Albers  
 Projection: Albers  
 Datum: North American 1983



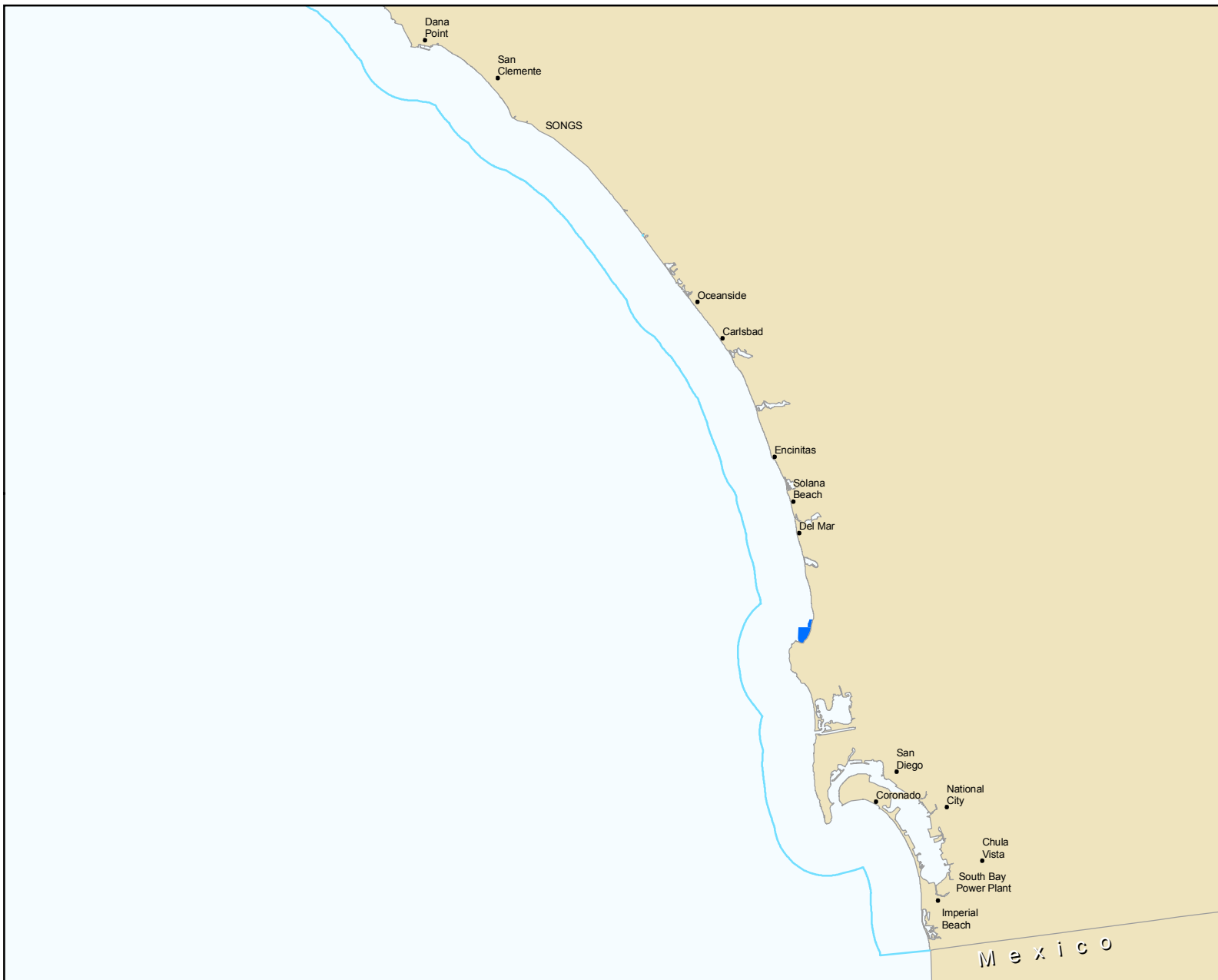
When a water body does not meet established water quality standards, it is placed on an impaired waters list mandated by §303(d) of the federal Clean Water Act.

Version: 1.4  
 Printing Date: Feb 13, 2009

Map 3b



For more detailed maps please visit:  
[www.marinemap.org/marinemap](http://www.marinemap.org/marinemap)



**Legend**

South Coast Study Region Boundary



Area of Special Biological Significance



Marine Life Protection Act Initiative

**Projection Information:**

Name: NAD 1983 California Teale Albers  
Projection: Albers  
Datum: North American 1983



0 1.25 2.5 5 Miles  
1:650,000

Version: 1.2  
Printing Date: Feb 13, 2009

Map 3c