

Marine Life Protection Act Initiative



Goal 3 Evaluation: MPA Proposals Relative to Recreational, Educational and Study Opportunities

Darci Connor, Marine Planner, MLPA Initiative

Presentation to the South Coast Regional Stakeholder Group
January 14, 2008 • San Diego, CA



Goal 3 of the MLPA

Goal 3 of the Marine Life Protection Act is:

*“To improve **recreational, educational, and study opportunities** provided by marine ecosystems that are subject to minimal human disturbance, and to manage these uses in a manner consistent with protecting biodiversity.”*

Seven parameters to evaluate marine protected area (MPA) proposals relative to Goal 3



Recreational Opportunities

Parameters to evaluate recreational opportunities

- Access points within or near proposed MPAs
- Boat and kayak launch sites within or near proposed MPAs
- Ports and harbors within given distances of proposed MPAs
- State parks adjacent to proposed MPAs

Recreational Opportunities

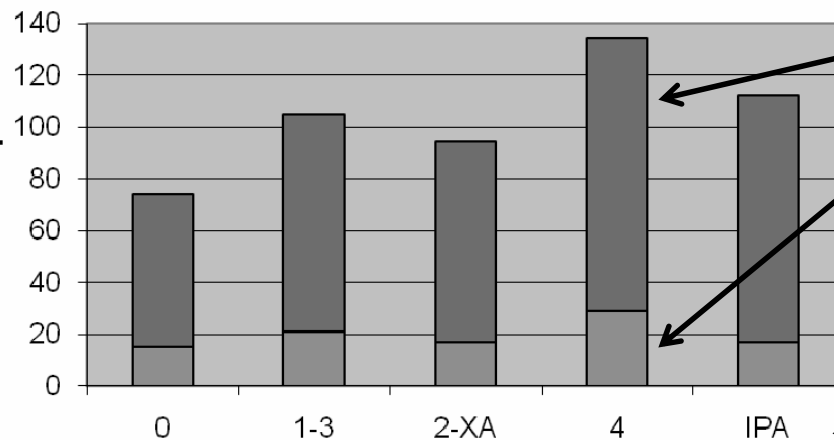
Example figure (from the north central coast)

Parameter

Number of Access Points within or Near Proposed MPAs
(All MPAs)

Tallies
total # of
access
pts

Number of access points



Existing MPAs, NCCRSR Proposals, and IPA - April 2008

Different
distances of
MPAs from
access pts

Proposals
listed along
the x-axis



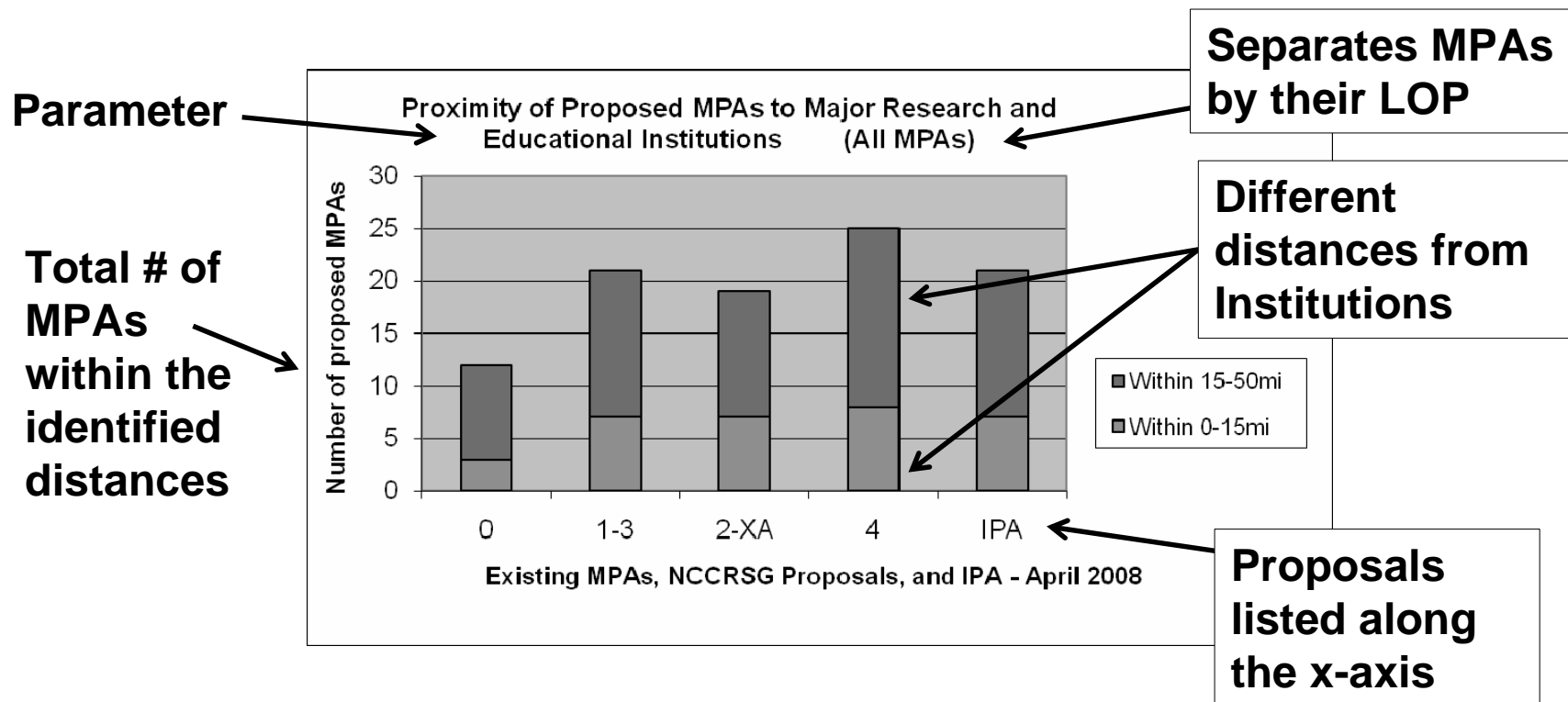
Educational Opportunities

Parameters to evaluate educational opportunities

- Major marine research and educational institutes within given distances of proposed MPAs
 - Aquariums
 - Research and education
 - Research only
 - Education only
- State park with educational components that are adjacent to proposed MPAs (also recreational parameter)

Educational Opportunities

Example figure (from the north central coast)



LOP= Level of protection, MPA= marine protected area



Study Opportunities

Parameters to evaluate study opportunities

- Number of long-term marine monitoring sites
 - CalCOFI, CRANE, MARINE, PISCO, Reef Check, SCCOOS
- Replication of habitats within study region
 - 16 habitat types
 - Sandy beaches, rocky shore, surfgrass, kelp, etc

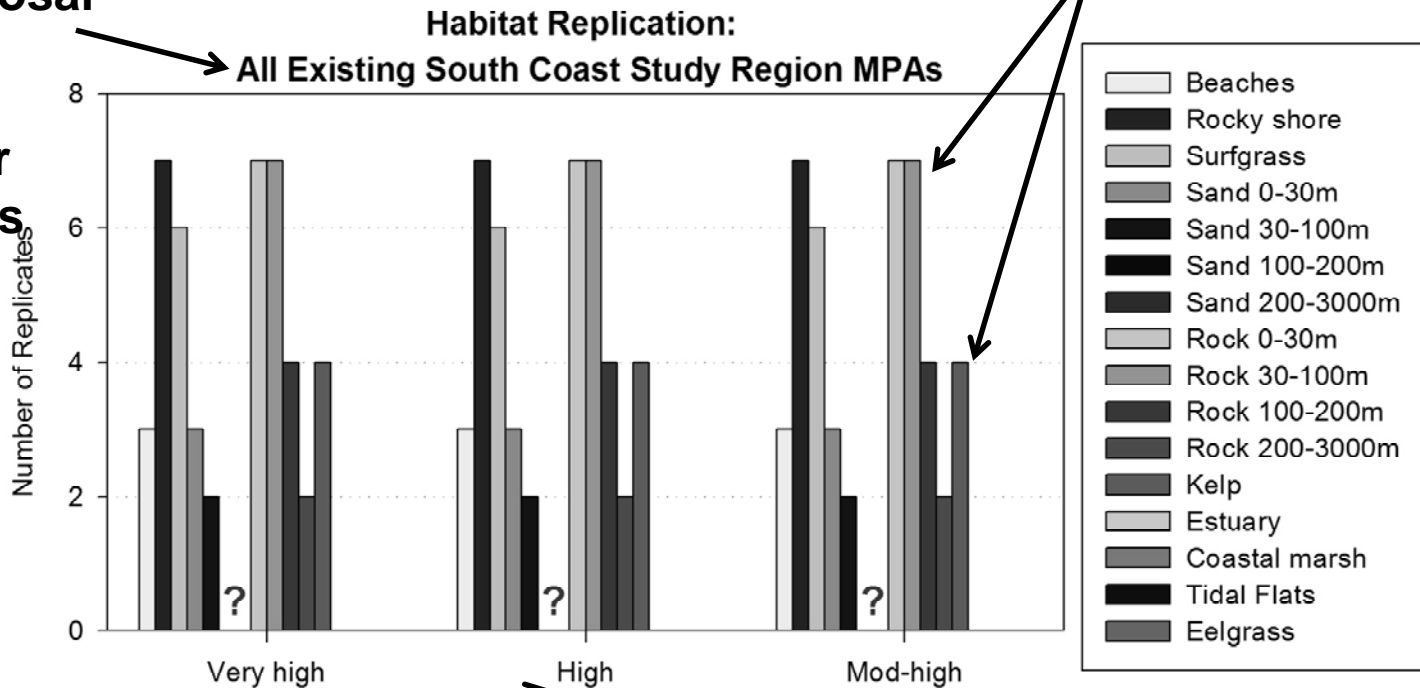
Study Opportunities

Example figure of preliminary habitat replication for existing MPAs in the south coast

Proposal

Habitat types

Parameter (# of MPAs with that habitat type)



Separates MPAs by their LOP



Evaluation process

- Evaluation will be conducted following each round of MPA proposal development by the MLPA South Coast Regional Stakeholder Group (SCRSG)
- SCRSG may use evaluation to inform refinement of proposals in order to better address Goal 3 of the MLPA